

Datasheet for ABIN953112
anti-KRBA2 antibody (Middle Region)[Go to Product page](#)

3 Images

Overview

Quantity:	0.4 mL
Target:	KRBA2
Binding Specificity:	AA 164-194, Middle Region
Reactivity:	Human
Host:	Rabbit
Clonality:	Polyclonal
Conjugate:	This KRBA2 antibody is un-conjugated
Application:	Western Blotting (WB), Immunofluorescence (IF), Enzyme Immunoassay (EIA)

Product Details

Immunogen:	KLH conjugated synthetic peptide between 164-194 amino acids from the Central region of human KRBA2
Isotype:	Ig Fraction
Specificity:	This antibody reacts to KRBA2.
Cross-Reactivity (Details):	Species reactivity (tested):Human.
Purification:	Affinity chromatography on Protein A

Target Details

Target:	KRBA2
Alternative Name:	KRBA2 (KRBA2 Products)

Target Details

Background:	Synonyms: KRAB-A domain-containing protein 2
Molecular Weight:	56205 Da
Gene ID:	124751
NCBI Accession:	NP_998762

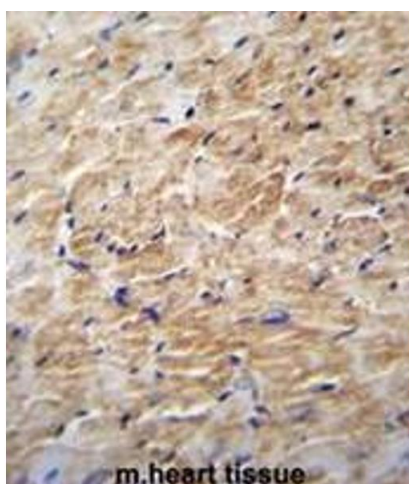
Application Details

Application Notes:	Optimal working dilution should be determined by the investigator.
Restrictions:	For Research Use only

Handling

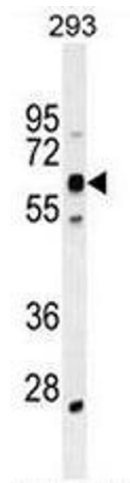
Format:	Liquid
Concentration:	0.25 mg/mL
Buffer:	PBS, 0.09 % (W/V) sodium azide
Preservative:	Sodium azide
Precaution of Use:	This product contains sodium azide: a POISONOUS AND HAZARDOUS SUBSTANCE which should be handled by trained staff only.
Handling Advice:	Avoid repeated freezing and thawing.
Storage:	4 °C/-20 °C
Storage Comment:	Store the antibody undiluted at 2-8 °C for one month or (in aliquots) at -20 °C for longer.

Images



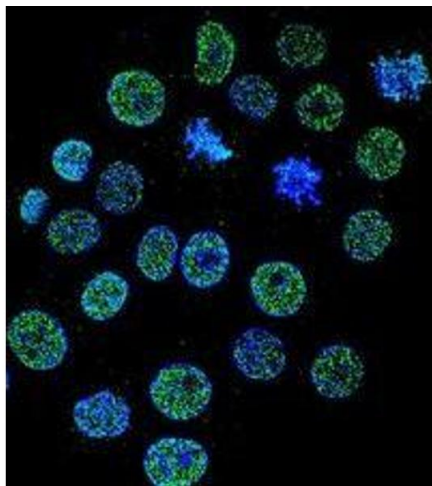
Immunohistochemistry (Paraffin-embedded Sections)

Image 1. KRBA2 Antibody (Center) immunohistochemistry analysis in formalin fixed and paraffin embedded m.heart tissue followed by peroxidase conjugation of the secondary antibody and DAB staining. This data demonstrates the use of KRBA2 Antibody (Center) for immunohistochemistry. Clinical relevance has not been evaluated.



Western Blotting

Image 2. KRBA2 Antibody (Center) western blot analysis in 293 cell line lysates (35µg/lane). This demonstrates the KCat. #A2 antibody detected the KCat. #A2 protein (arrow).



Immunofluorescence

Image 3. Confocal immunofluorescent analysis of KRBA2 Antibody (Center)(Cat#AP52406PU-N) with 293 cell followed by Alexa Fluor 488-conjugated goat anti-rabbit IgG (green). DAPI was used to stain the cell nuclear (blue).