

Datasheet for ABIN953115
anti-KRI1 antibody (N-Term)

2 Images

[Go to Product page](#)

Overview

Quantity:	0.4 mL
Target:	KRI1
Binding Specificity:	N-Term
Reactivity:	Human
Host:	Rabbit
Clonality:	Polyclonal
Conjugate:	This KRI1 antibody is un-conjugated
Application:	Western Blotting (WB), Immunohistochemistry (Paraffin-embedded Sections) (IHC (p)), Enzyme Immunoassay (EIA)

Product Details

Isotype:	Ig Fraction
Cross-Reactivity (Details):	Species reactivity (tested):Human.
Purification:	Affinity Purified

Target Details

Target:	KRI1
Alternative Name:	KRI1 (KRI1 Products)
Background:	This gene overlaps with the gene for cysteine endopeptidase AUT-like 4 in a head-to-tail orientation. [provided by RefSeq].Synonyms: Protein homolog

Target Details

Molecular Weight:	83252 Da
Gene ID:	65095
NCBI Accession:	NP_075384

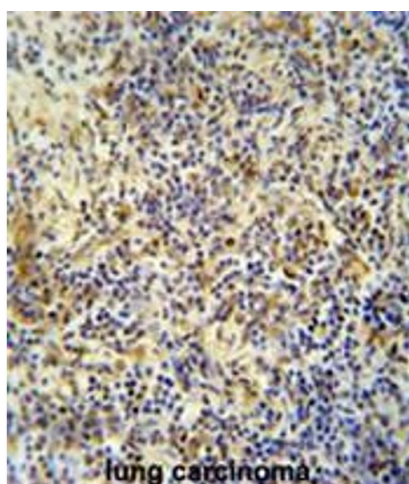
Application Details

Application Notes:	Optimal working dilution should be determined by the investigator.
Restrictions:	For Research Use only

Handling

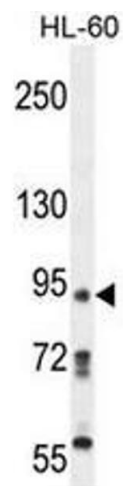
Format:	Liquid
Concentration:	0.25 mg/mL
Buffer:	Purified polyclonal antibody supplied in PBS with 0.09 % (W/V) sodium azide. This antibody is purified through a protein A column, followed by peptide affinity purification.
Preservative:	Sodium azide
Precaution of Use:	This product contains sodium azide: a POISONOUS AND HAZARDOUS SUBSTANCE which should be handled by trained staff only.
Handling Advice:	Avoid repeated freezing and thawing.
Storage:	4 °C/-20 °C
Storage Comment:	Store the antibody undiluted at 2-8 °C for one month or (in aliquots) at -20 °C for longer.

Images



Immunohistochemistry (Paraffin-embedded Sections)

Image 1. KRI1 antibody (N-term) immunohistochemistry analysis in formalin fixed and paraffin embedded human lung carcinoma followed by peroxidase conjugation of the secondary antibody and DAB staining. This data demonstrates the use of the KRI1 antibody (N-term) for immunohistochemistry. Clinical relevance has not been evaluated.



Western Blotting

Image 2. KRI1 Antibody (N-term) western blot analysis in HL-60 cell line lysates (35µg/lane). This demonstrates the KRI1 antibody detected the KRI1 protein (arrow).