

Datasheet for ABIN953118

**anti-KRTAP1-3 antibody (Middle Region)**[Go to Product page](#)**1** Image

## Overview

Quantity:	0.4 mL
Target:	KRTAP1-3
Binding Specificity:	AA 95-125, Middle Region
Reactivity:	Human
Host:	Rabbit
Clonality:	Polyclonal
Conjugate:	This KRTAP1-3 antibody is un-conjugated
Application:	Western Blotting (WB), Enzyme Immunoassay (EIA)

## Product Details

Immunogen:	KLH conjugated synthetic peptide between 95-125 amino acids from the Central region of human KRTAP1-3
Isotype:	Ig Fraction
Specificity:	This antibody reacts to KRTAP1-3
Cross-Reactivity (Details):	Species reactivity (tested):Human.
Purification:	Affinity chromatography on Protein A

## Target Details

Target:	KRTAP1-3
Alternative Name:	KRTAP1-3 ( <a href="#">KRTAP1-3 Products</a> )

## Target Details

**Background:** This protein is a member of the keratin-associated protein (KAP) family. The KAP proteins form a matrix of keratin intermediate filaments which contribute to the structure of hair fibers. KAP family members appear to have unique, family-specific amino- and carboxyl-terminal regions and are subdivided into three multi-gene families according to amino acid composition: the high sulfur, the ultrahigh sulfur, and the high tyrosine/glycine KAPs. This protein is a member of the high sulfur KAP family and the gene is localized to a cluster of KAPs at 17q12-q21. [provided by RefSeq].Synonyms: B2B, KAP1.2, KAP1.3, KAP1.8, KAP1.9, KRATP1.9, KRTAP1.8, Keratin-associated protein 1-3

**Molecular Weight:** 18184 Da

**Gene ID:** 81850

**NCBI Accession:** [NP\\_112228](#)

## Application Details

**Application Notes:** Optimal working dilution should be determined by the investigator.

**Restrictions:** For Research Use only

## Handling

**Format:** Liquid

**Concentration:** 0.25 mg/mL

**Buffer:** PBS, 0.09 % (W/V) sodium azide

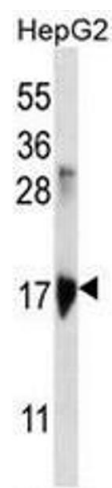
**Preservative:** Sodium azide

**Precaution of Use:** This product contains sodium azide: a POISONOUS AND HAZARDOUS SUBSTANCE which should be handled by trained staff only.

**Handling Advice:** Avoid repeated freezing and thawing.

**Storage:** 4 °C/-20 °C

**Storage Comment:** Store the antibody undiluted at 2-8 °C for one month or (in aliquots) at -20 °C for longer.



Western Blotting

**Image 1.** KRTAP1-3 Antibody (Center) western blot analysis in HepG2 cell line lysates (35µg/lane). This demonstrates the KRTAP1-3 antibody detected the KRTAP1-3 protein (arrow).