



Datasheet for ABIN953119
anti-KRTAP13-3 antibody (C-Term)



[Go to Product page](#)

1 Image

Overview

Quantity:	0.4 mL
Target:	KRTAP13-3
Binding Specificity:	AA 107-135, C-Term
Reactivity:	Human
Host:	Rabbit
Clonality:	Polyclonal
Conjugate:	This KRTAP13-3 antibody is un-conjugated
Application:	Western Blotting (WB), Enzyme Immunoassay (EIA)

Product Details

Immunogen:	KLH conjugated synthetic peptide between 107-135 amino acids from the C-terminal region of human KRTAP13-3
Isotype:	Ig Fraction
Specificity:	This antibody reacts to KRTAP13-3.
Cross-Reactivity (Details):	Species reactivity (tested):Human.
Purification:	Affinity chromatography on Protein A

Target Details

Target:	KRTAP13-3
Alternative Name:	KRTAP13-3 / KAP13.3 (KRTAP13-3 Products)

Target Details

Background: N the hair cortex, hair keratin intermediate filaments are embedded in an interfilamentous matrix, consisting of hair keratin-associated proteins (KRTAP), which are essential for the formation of a rigid and resistant hair shaft through their extensive disulfide bond cross-linking with abundant cysteine residues of hair keratins. The matrix proteins include the high-sulfur and high-glycine-tyrosine keratins (By similarity)Synonyms: Keratin-associated protein 13-3

Molecular Weight: 19236 Da

Gene ID: 337960

NCBI Accession: [NP_853653](#)

Application Details

Application Notes: Optimal working dilution should be determined by the investigator.

Restrictions: For Research Use only

Handling

Format: Liquid

Concentration: 0.25 mg/mL

Buffer: PBS, 0.09 % (W/V) sodium azide

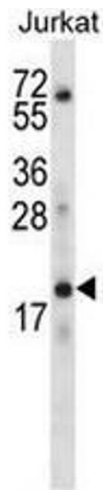
Preservative: Sodium azide

Precaution of Use: This product contains sodium azide: a POISONOUS AND HAZARDOUS SUBSTANCE which should be handled by trained staff only.

Handling Advice: Avoid repeated freezing and thawing.

Storage: 4 °C/-20 °C

Storage Comment: Store the antibody undiluted at 2-8 °C for one month or (in aliquots) at -20 °C for longer.



Western Blotting

Image 1. KRTAP13-3 Antibody (C-term) western blot analysis in Jurkat cell line lysates (35µg/lane). This demonstrates the KRTAP13-3 antibody detected the KRTAP13-3 protein (arrow).