



[Go to Product page](#)

Datasheet for ABIN953130

## anti-Ladinin 1 antibody (N-Term)

### 2 Images

#### Overview

Quantity:	0.4 mL
Target:	Ladinin 1 (LAD1)
Binding Specificity:	AA 150-180, N-Term
Reactivity:	Human
Host:	Rabbit
Clonality:	Polyclonal
Conjugate:	This Ladinin 1 antibody is un-conjugated
Application:	Western Blotting (WB), Immunohistochemistry (Paraffin-embedded Sections) (IHC (p)), Enzyme Immunoassay (EIA)

#### Product Details

Immunogen:	Synthetic peptide - KLH conjugated - corresponding to the N-terminal region (between 150-180aa) of human Ladinin-1.
Isotype:	Ig Fraction
Specificity:	This antibody detects human Ladinin-1 at N-term.
Cross-Reactivity (Details):	Species reactivity (tested):Human
Purification:	Purified through a protein A column; followed by peptide affinity purification.

#### Target Details

Target:	Ladinin 1 (LAD1)
---------	------------------

## Target Details

---

Alternative Name:	Ladinin-1 ( <a href="#">LAD1 Products</a> )
Background:	The protein encoded by the LAD1 gene may be an anchoring filament that is a component of basement membranes. It may contribute to the stability of the association of the epithelial layers with the underlying mesenchyme.Synonyms: LAD, LAD1, LADA, Linear IgA disease antigen
Gene ID:	3898
NCBI Accession:	<a href="#">NP_005549</a>

## Application Details

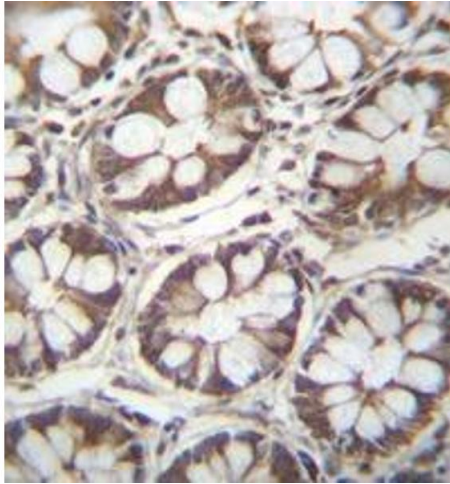
---

Application Notes:	Optimal working dilution should be determined by the investigator.
Restrictions:	For Research Use only

## Handling

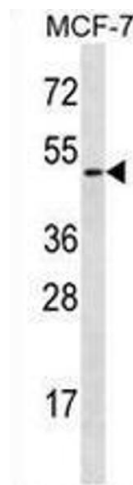
---

Format:	Liquid
Concentration:	0.25 mg/mL
Buffer:	PBS with 0.09 % (W/V) Sodium Azide.
Preservative:	Sodium azide
Precaution of Use:	This product contains sodium azide: a POISONOUS AND HAZARDOUS SUBSTANCE which should be handled by trained staff only.
Handling Advice:	Avoid repeated freezing and thawing.
Storage:	4 °C/-20 °C
Storage Comment:	Store the antibody undiluted at 2-8 °C for one month or (in aliquots) at -20 °C for longer.



### Immunohistochemistry (Paraffin-embedded Sections)

**Image 1.** Immunohistochemistry analysis in human rectum tissue (formalin-fixed, paraffin-embedded) using Ladinin-1 Antibody (N-term), followed by peroxidase conjugation of the secondary antibody and DAB staining. This data demonstrates the use of Ladinin-1 antibody for IHC. Clinical relevance has not been evaluated.



### Western Blotting

**Image 2.** Western blot analysis in MCF-7 cell line lysates (35ug/lane) using Ladinin-1 Antibody (N-term). This demonstrates the Ladinin-1 antibody detected the LAD1 protein (arrow).