

Datasheet for ABIN953135
anti-LAPTM5 antibody (N-Term)

3 Images

[Go to Product page](#)

Overview

Quantity:	0.4 mL
Target:	LAPTM5
Binding Specificity:	AA 30-58, N-Term
Reactivity:	Human
Host:	Rabbit
Clonality:	Polyclonal
Conjugate:	This LAPTM5 antibody is un-conjugated
Application:	Western Blotting (WB), Flow Cytometry (FACS), Immunohistochemistry (Paraffin-embedded Sections) (IHC (p)), Enzyme Immunoassay (EIA)

Product Details

Immunogen:	Synthetic peptide - KLH conjugated - corresponding to the N-terminal region (between 30-58aa) of human LAPTM5.
Isotype:	Ig Fraction
Specificity:	This antibody detects human LAPTM5 at N-term.
Cross-Reactivity (Details):	Species reactivity (tested):Human
Purification:	Purified through a protein A column; followed by peptide affinity purification.

Target Details

Target:	LAPTM5
---------	--------

Target Details

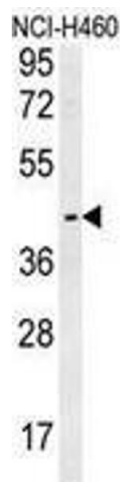
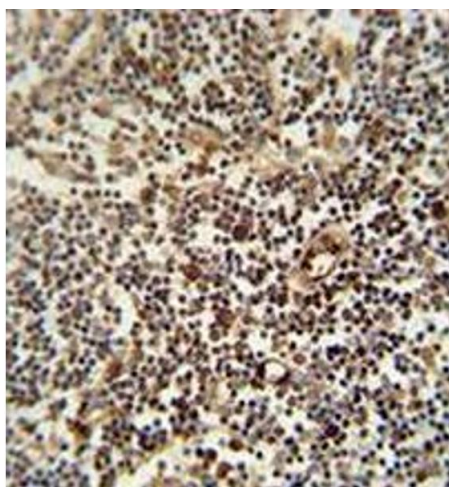
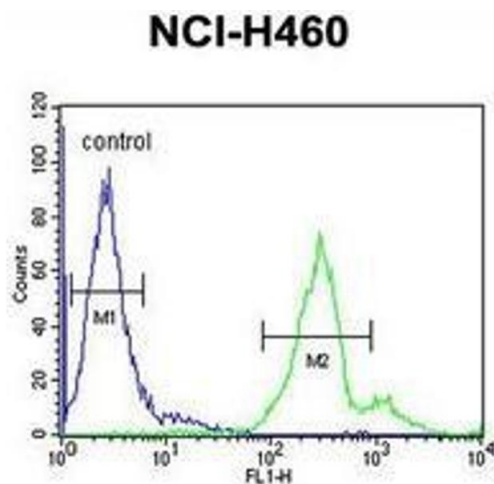
Alternative Name:	LAPTM5 (LAPTM5 Products)
Background:	Synonyms: KIAA0085, LAPTM5, Lysosomal-associated multitransmembrane protein 5, Lysosomal-associated transmembrane protein 5, Retinoic acid-inducible E3 protein
Gene ID:	7805
NCBI Accession:	NP_006753

Application Details

Application Notes:	Optimal working dilution should be determined by the investigator.
Restrictions:	For Research Use only

Handling

Format:	Liquid
Concentration:	0.25 mg/mL
Buffer:	PBS with 0.09 % (W/V) Sodium Azide.
Preservative:	Sodium azide
Precaution of Use:	This product contains sodium azide: a POISONOUS AND HAZARDOUS SUBSTANCE which should be handled by trained staff only.
Handling Advice:	Avoid repeated freezing and thawing.
Storage:	4 °C/-20 °C
Storage Comment:	Store the antibody undiluted at 2-8 °C for one month or (in aliquots) at -20 °C for longer.



Flow Cytometry

Image 1. Flow cytometric analysis of NCI-H460 cells (right histogram) compared to a negative control cell (left histogram) using LAPT5 Antibody (N-term), followed by FITC-conjugated goat-anti-rabbit secondary antibodies.

Immunohistochemistry (Paraffin-embedded Sections)

Image 2. Immunohistochemistry analysis in human lymph node (formalin-fixed, paraffin-embedded) using LAPT5 Antibody (N-term), followed by peroxidase conjugation of the secondary antibody and DAB staining. This data demonstrates the use of the LAPT5 antibody for IHC. Clinical relevance has not been evaluated.

Western Blotting

Image 3. Western blot analysis in NCI-H460 cell line lysates (35ug/lane) using LAPT5 Antibody (N-term). This demonstrates the LAPT5 antibody detected the LAPT5 protein (arrow).