

Datasheet for ABIN953137
anti-LARP6 antibody (N-Term)

3 Images

[Go to Product page](#)

Overview

Quantity:	0.4 mL
Target:	LARP6
Binding Specificity:	AA 10-39, N-Term
Reactivity:	Human
Host:	Rabbit
Clonality:	Polyclonal
Conjugate:	This LARP6 antibody is un-conjugated
Application:	Western Blotting (WB), Flow Cytometry (FACS), Immunohistochemistry (Paraffin-embedded Sections) (IHC (p)), Enzyme Immunoassay (EIA)

Product Details

Immunogen:	Synthetic peptide - KLH conjugated - corresponding to the N-terminal region (between 10-39aa) of human LARP6.
Isotype:	Ig Fraction
Specificity:	This antibody recognizes LARP6.
Cross-Reactivity (Details):	Species reactivity (tested):Human
Purification:	Purified through a Protein A column followed by peptide affinity purification

Target Details

Target:	LARP6
---------	-------

Target Details

Alternative Name:	LARP6 (LARP6 Products)
Background:	LARP6 is a member of the La ribonucleoprotein domain family, which all contain one characteristic La motif. LARP6 shuttles between the cytoplasm and nucleus. It is proposed that members of this family play a role in translation and mRNA stability.Synonyms: Acheron, Achn, LARP6, La ribonucleoprotein domain family member 6, La-related protein 6
Gene ID:	55323
NCBI Accession:	NP_060827

Application Details

Application Notes:	Optimal working dilution should be determined by the investigator.
Restrictions:	For Research Use only

Handling

Format:	Liquid
Concentration:	0.25 mg/mL
Buffer:	PBS with 0.09 % (W/V) Sodium azide
Preservative:	Sodium azide
Precaution of Use:	This product contains sodium azide: a POISONOUS AND HAZARDOUS SUBSTANCE which should be handled by trained staff only.
Handling Advice:	Avoid repeated freezing and thawing.
Storage:	4 °C/-20 °C
Storage Comment:	Store undiluted at 2-8 °C for one month or (in aliquots) at -20 °C for longer.



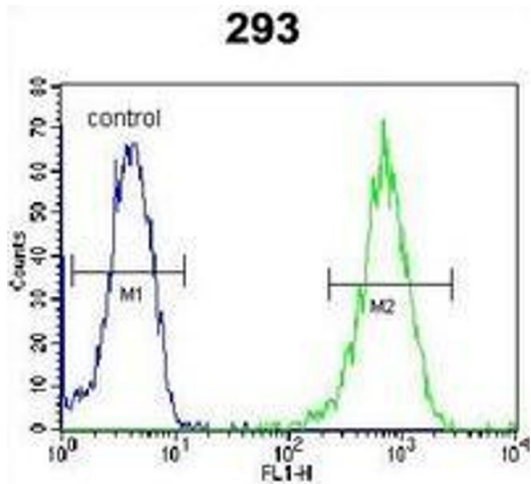
Immunohistochemistry (Paraffin-embedded Sections)

Image 1. Immunohistochemistry analysis in mouse heart tissue (Formalin-fixed, Paraffin-embedded) using LARP6 Antibody (N-term), followed by peroxidase conjugation of the secondary antibody and DAB staining. This data demonstrates the use of the LARP6 antibody for IHC. Clinical relevance has not been evaluated.



Western Blotting

Image 2. Western blot analysis in 293 cell line lysates (35ug/lane) using LARP6 Antibody (N-term). This demonstrates the LARP6 antibody detected the LARP6 protein (arrow).



Flow Cytometry

Image 3. Flow cytometric analysis of 293 cells (right histogram) compared to a negative control cell (left histogram) using LARP6 Antibody (N-term), followed by FITC-conjugated goat-anti-rabbit secondary antibodies.