

Datasheet for ABIN953140
anti-LARS2 antibody (Middle Region)

2 Images

[Go to Product page](#)

Overview

Quantity:	0.4 mL
Target:	LARS2
Binding Specificity:	AA 425-453, Middle Region
Reactivity:	Human
Host:	Rabbit
Clonality:	Polyclonal
Conjugate:	This LARS2 antibody is un-conjugated
Application:	Western Blotting (WB), Enzyme Immunoassay (EIA)

Product Details

Immunogen:	KLH conjugated synthetic peptide between 425-453 amino acids from the Central region of Human LARS2.
Isotype:	Ig Fraction
Specificity:	This antibody recognizes Human LARS2 (Center).
Purification:	Saturated Ammonium Sulfate (SAS) precipitation followed by dialysis against PBS

Target Details

Target:	LARS2
Alternative Name:	LARS2 (LARS2 Products)
Background:	This gene encodes a class 1 aminoacyl-tRNA synthetase, mitochondrial leucyl-tRNA

Target Details

synthetase. Each of the twenty aminoacyl-tRNA synthetases catalyzes the aminoacylation of a specific tRNA or tRNA isoaccepting family with the cognate amino acid. Synonyms: EC=6.1.1.4, KIAA0028, LARS2, LeuRS, Leucine-tRNA ligase, Leucyl-tRNA synthetase, mitochondrial

Molecular Weight: 101976 Da

Gene ID: 23395

NCBI Accession: [NP_056155](#)

Application Details

Application Notes: Optimal working dilution should be determined by the investigator.

Restrictions: For Research Use only

Handling

Format: Liquid

Concentration: 0.25 mg/mL

Buffer: PBS containing 0.09 % (W/V) Sodium Azide as preservative

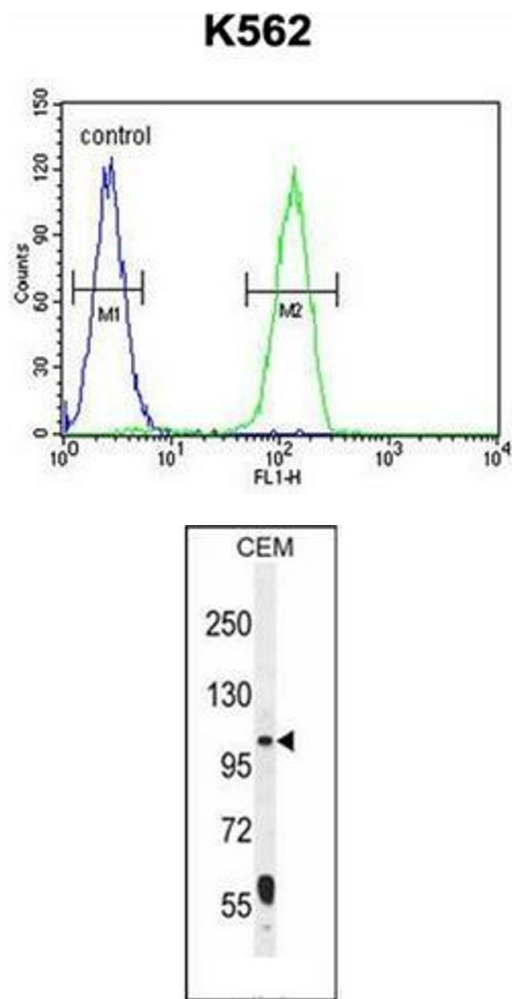
Preservative: Sodium azide

Precaution of Use: This product contains sodium azide: a POISONOUS AND HAZARDOUS SUBSTANCE which should be handled by trained staff only.

Handling Advice: Avoid repeated freezing and thawing.

Storage: 4 °C/-20 °C

Storage Comment: Store undiluted at 2-8 °C for one month or (in aliquots) at -20 °C for longer.



Flow Cytometry

Image 1. Flow cytometric analysis of K562 cells using LARS2 Antibody (Center) Cat.-No AP52445PU-N (right histogram) compared to a negative control cell (left histogram). FITC-conjugated goat-anti-rabbit secondary antibodies were used for the analysis.

Western Blotting

Image 2. Western blot analysis of LARS2 Antibody (Center) in CEM cell line lysates (35ug/lane). This demonstrates the LARS2 antibody detected the LARS2 protein (arrow).