

Datasheet for ABIN953145  
**anti-LCAT antibody (Middle Region)**

## 4 Images

[Go to Product page](#)

## Overview

Quantity:	0.4 mL
Target:	LCAT
Binding Specificity:	AA 292-321, Middle Region
Reactivity:	Human
Host:	Rabbit
Clonality:	Polyclonal
Conjugate:	This LCAT antibody is un-conjugated
Application:	Western Blotting (WB), Immunofluorescence (IF), Flow Cytometry (FACS), Immunohistochemistry (Paraffin-embedded Sections) (IHC (p)), Enzyme Immunoassay (EIA)

## Product Details

Immunogen:	Synthetic peptide - KLH conjugated - corresponding to the central region (between 292-321aa) of human LCAT.
Isotype:	Ig Fraction
Specificity:	This antibody recognizes LCAT.
Cross-Reactivity (Details):	Species reactivity (tested):Human
Purification:	Purified through a Protein A column followed by peptide affinity purification

## Target Details

Target:	LCAT
---------	------

## Target Details

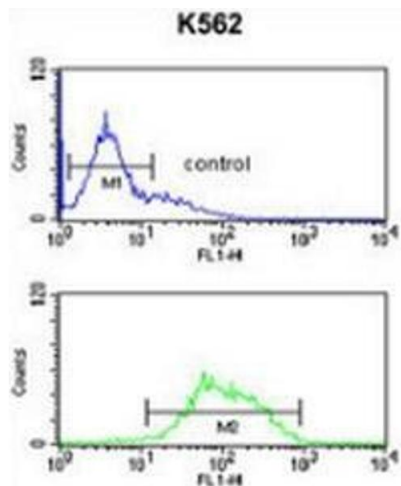
Alternative Name:	LCAT ( <a href="#">LCAT Products</a> )
Background:	LCAT encodes the extracellular cholesterol esterifying enzyme, lecithin-cholesterol acyltransferase. The esterification of cholesterol is required for cholesterol transport.Synonyms: Lecithin-cholesterol acyltransferase, Phosphatidylcholine-sterol acyltransferase, Phospholipid-cholesterol acyltransferase
Gene ID:	3931
NCBI Accession:	<a href="#">NP_000220</a>
Pathways:	<a href="#">Lipid Metabolism</a>

## Application Details

Application Notes:	Optimal working dilution should be determined by the investigator.
Restrictions:	For Research Use only

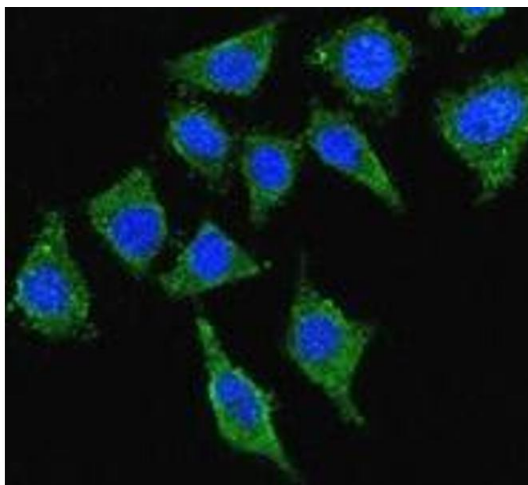
## Handling

Format:	Liquid
Concentration:	0.25 mg/mL
Buffer:	PBS with 0.09 % (W/V) Sodium azide
Preservative:	Sodium azide
Precaution of Use:	This product contains sodium azide: a POISONOUS AND HAZARDOUS SUBSTANCE which should be handled by trained staff only.
Handling Advice:	Avoid repeated freezing and thawing.
Storage:	4 °C/-20 °C
Storage Comment:	Store undiluted at 2-8 °C for one month or (in aliquots) at -20 °C for longer.



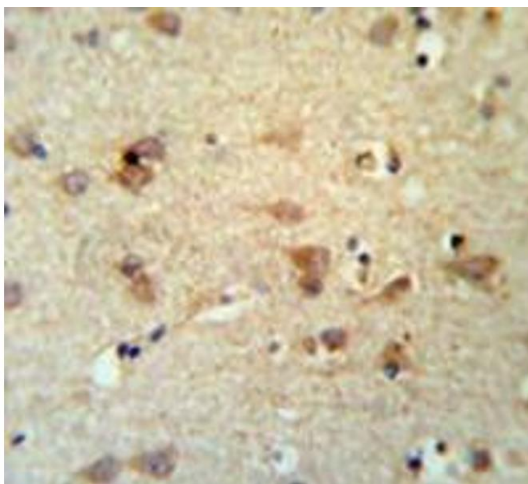
### Flow Cytometry

**Image 1.** Flow cytometric analysis of K562 cells (bottom histogram) compared to a negative control cell (top histogram) using LCAT Antibody , followed by FITC-conjugated goat-anti-rabbit secondary antibodies.



### Immunofluorescence

**Image 2.** Confocal immunofluorescent analysis with 293 cells using LCAT Antibody , followed by Alexa Fluor® 488-conjugated goat anti-rabbit IgG (green). DAPI was used to stain the cell nuclear (blue).



### Immunohistochemistry (Paraffin-embedded Sections)

**Image 3.** Immunohistochemistry analysis in brain tissue (Formalin-fixed, Paraffin-embedded) using LCAT Antibody , followed by peroxidase conjugation of the secondary antibody and DAB staining. This data demonstrates the use of the LCAT antibody for IHC; Clinical relevance has not been evaluated.

Please check the [product details page](#) for more images. Overall 4 images are available for ABIN953145.