

Datasheet for ABIN953146
anti-LCE1A antibody (C-Term)

2 Images

[Go to Product page](#)

Overview

Quantity:	0.4 mL
Target:	LCE1A
Binding Specificity:	AA 57-87, C-Term
Reactivity:	Human
Host:	Rabbit
Clonality:	Polyclonal
Conjugate:	This LCE1A antibody is un-conjugated
Application:	Western Blotting (WB), Immunohistochemistry (Paraffin-embedded Sections) (IHC (p)), Enzyme Immunoassay (EIA)

Product Details

Immunogen:	Synthetic peptide - KLH conjugated - corresponding to the C-terminal region (between 57-87aa) of human LCE1A.
Isotype:	Ig Fraction
Specificity:	This antibody recognizes LCE1A at C-term.
Cross-Reactivity (Details):	Species reactivity (tested):Human
Purification:	Purified through a Protein A column followed by peptide affinity purification

Target Details

Target:	LCE1A
---------	-------

Target Details

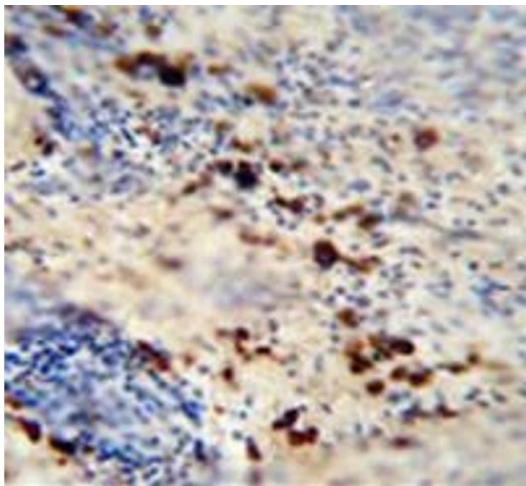
Alternative Name:	LCE1A (LCE1A Products)
Background:	LCE1A belongs to the late cornified envelope (LCE) gene cluster within the epidermal differentiation complex (EDC) on chromosome 1. The LCE cluster contains multiple conserved genes that encode stratum corneum proteins, and these genes are expressed relatively late during fetal assembly of the skin cornified envelope [Jackson et al., 2005, PubMed 15854049].Synonyms: LEP1, Late cornified envelope protein 1A
Gene ID:	353131
NCBI Accession:	NP_848125

Application Details

Application Notes:	Optimal working dilution should be determined by the investigator.
Restrictions:	For Research Use only

Handling

Format:	Liquid
Concentration:	0.25 mg/mL
Buffer:	PBS with 0.09 % (W/V) Sodium azide
Preservative:	Sodium azide
Precaution of Use:	This product contains sodium azide: a POISONOUS AND HAZARDOUS SUBSTANCE which should be handled by trained staff only.
Handling Advice:	Avoid repeated freezing and thawing.
Storage:	4 °C/-20 °C
Storage Comment:	Store undiluted at 2-8 °C for one month or (in aliquots) at -20 °C for longer.



Immunohistochemistry (Paraffin-embedded Sections)

Image 1. Immunohistochemistry analysis in human skin carcinoma (Formalin-fixed, Paraffin-embedded) using LCE1A Antibody (C-term), followed by peroxidase conjugation of the secondary antibody and DAB staining. This data demonstrates the use of the LCE1A antibody for IHC; Clinical relevance has not been evaluated.



Western Blotting

Image 2. Western blot analysis in T47D cell line lysates (35ug/lane) using LCE1A Antibody (C-term). This demonstrates the LCE1A antibody detected the LCE1A protein (arrow).