

Datasheet for ABIN953147
anti-LCE2B antibody (C-Term)[Go to Product page](#)

2 Images

Overview

Quantity:	0.4 mL
Target:	LCE2B (SPRL1B)
Binding Specificity:	AA 68-99, C-Term
Reactivity:	Human
Host:	Rabbit
Clonality:	Polyclonal
Conjugate:	This LCE2B antibody is un-conjugated
Application:	Western Blotting (WB), Flow Cytometry (FACS), Enzyme Immunoassay (EIA)

Product Details

Immunogen:	KLH conjugated synthetic peptide between 68-99 amino acids from the C-terminal region of human LCE2B.
Isotype:	Ig Fraction
Specificity:	This antibody recognizes Human LCE2B (C-term).
Purification:	Protein A column, followed by peptide affinity purification

Target Details

Target:	LCE2B (SPRL1B)
Alternative Name:	LCE2B (SPRL1B Products)
Background:	Synonyms: LEP10, SPRL1B, XP5

Target Details

Molecular Weight:	11219 Da
Gene ID:	26239
NCBI Accession:	NP_055172

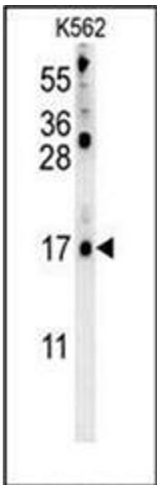
Application Details

Application Notes:	Optimal working dilution should be determined by the investigator.
Restrictions:	For Research Use only

Handling

Format:	Liquid
Concentration:	0.25 mg/mL
Buffer:	PBS containing 0.09 % (W/V) Sodium Azide as preservative
Preservative:	Sodium azide
Precaution of Use:	This product contains sodium azide: a POISONOUS AND HAZARDOUS SUBSTANCE which should be handled by trained staff only.
Handling Advice:	Avoid repeated freezing and thawing.
Storage:	4 °C/-20 °C
Storage Comment:	Store undiluted at 2-8 °C for one month or (in aliquots) at -20 °C for longer.

Images



Western Blotting

Image 1. Western blot analysis of LCE2B Antibody (C-term) in K562 cell line lysates (35ug/lane). This demonstrates the LCE2B antibody detected the LCE2B protein (arrow).

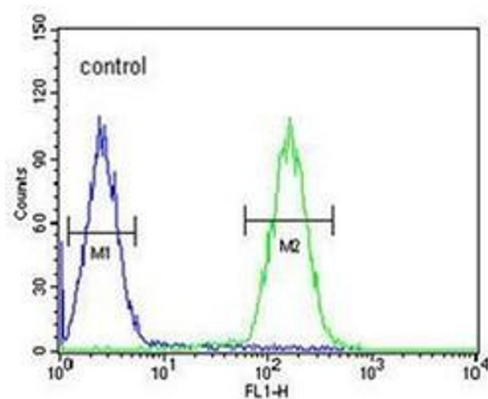
K562**Flow Cytometry**

Image 2. Flow cytometric analysis of K562 cells using LCE2B Antibody (C-term) Cat.-No AP52452PU-N (right histogram) compared to a negative control cell (left histogram). FITC-conjugated goat-anti-rabbit secondary antibodies were used for the analysis.