

Datasheet for ABIN953156  
**anti-LDLRAD3 antibody (C-Term)**



[Go to Product page](#)

1 Image

## Overview

Quantity:	0.4 mL
Target:	LDLRAD3
Binding Specificity:	AA 314-345, C-Term
Reactivity:	Human, Mouse
Host:	Rabbit
Clonality:	Polyclonal
Conjugate:	This LDLRAD3 antibody is un-conjugated
Application:	Western Blotting (WB), Enzyme Immunoassay (EIA)

## Product Details

Immunogen:	KLH conjugated synthetic peptide between 314-345 amino acids from the C-terminal region of Human LDLRAD3
Isotype:	Ig Fraction
Specificity:	This antibody recognizes Human and Mouse LDLRAD3 (C-term).
Purification:	Protein A column, followed by peptide affinity purification

## Target Details

Target:	LDLRAD3
Alternative Name:	LDLRAD3 ( <a href="#">LDLRAD3 Products</a> )
Background:	Synonyms: Low-density lipoprotein receptor class A domain-containing protein 3

### Target Details

Molecular Weight:	37419 Da
Gene ID:	143458
NCBI Accession:	<a href="#">NP_777562</a>

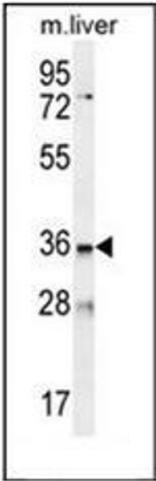
### Application Details

Application Notes:	Optimal working dilution should be determined by the investigator.
Restrictions:	For Research Use only

### Handling

Format:	Liquid
Concentration:	0.25 mg/mL
Buffer:	PBS containing 0.09 % (W/V) Sodium Azide as preservative
Preservative:	Sodium azide
Precaution of Use:	This product contains sodium azide: a POISONOUS AND HAZARDOUS SUBSTANCE which should be handled by trained staff only.
Handling Advice:	Avoid repeated freezing and thawing.
Storage:	4 °C/-20 °C
Storage Comment:	Store undiluted at 2-8 °C for one month or (in aliquots) at -20 °C for longer.

### Images



#### Western Blotting

**Image 1.** Western blot analysis of LDLRAD3 Antibody (C-term) in mouse liver tissue lysates (35ug/lane). This demonstrates the LDLRAD3 antibody detected the LDLRAD3 protein (arrow).