

Datasheet for ABIN953161
anti-Leptin antibody (N-Term)

5 Images

[Go to Product page](#)

Overview

Quantity:	0.4 mL
Target:	Leptin (LEP)
Binding Specificity:	AA 7-37, N-Term
Reactivity:	Human
Host:	Rabbit
Clonality:	Polyclonal
Conjugate:	This Leptin antibody is un-conjugated
Application:	Western Blotting (WB), Immunofluorescence (IF), Flow Cytometry (FACS), Enzyme Immunoassay (EIA), Immunohistochemistry (Paraffin-embedded Sections) (IHC (p))

Product Details

Immunogen:	KLH conjugated synthetic peptide between 7-37 amino acids from the N-terminal region of Human Leptin. Genename: LEP
Isotype:	Ig Fraction
Specificity:	This antibody recognizes Human Leptin (N-term).
Purification:	Protein A column, followed by peptide affinity purification

Target Details

Target:	Leptin (LEP)
Alternative Name:	Leptin (LEP Products)

Target Details

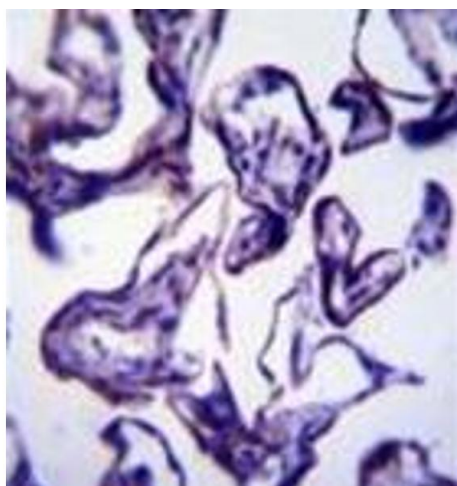
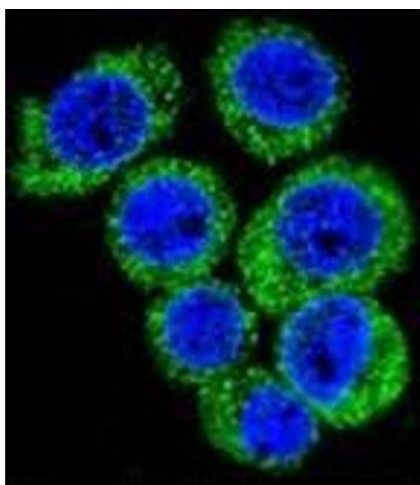
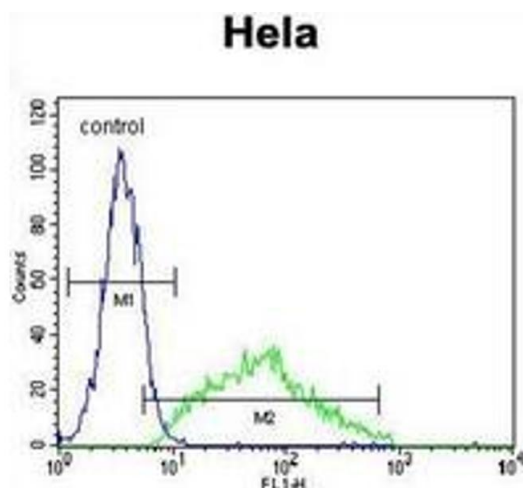
Background:	This gene encodes a protein that is secreted by white adipocytes, and which plays a major role in the regulation of body weight. This protein, which acts through the leptin receptor, functions as part of a signaling pathway that can inhibit food intake and/or regulate energy expenditure to maintain constancy of the adipose mass. This protein also has several endocrine functions, and is involved in the regulation of immune and inflammatory responses, hematopoiesis, angiogenesis and wound healing. Mutations in this gene and/or its regulatory regions cause severe obesity, and morbid obesity with hypogonadism. This gene has also been linked to type 2 diabetes mellitus development. [provided by RefSeq].Synonyms: LEP, OB, OBS, Obese protein, Obesity factor
Molecular Weight:	18641 Da
Gene ID:	3952
NCBI Accession:	NP_000221
Pathways:	JAK-STAT Signaling , AMPK Signaling , Hormone Transport , Peptide Hormone Metabolism , Hormone Activity , Negative Regulation of Hormone Secretion , Regulation of Carbohydrate Metabolic Process , Feeding Behaviour , Monocarboxylic Acid Catabolic Process

Application Details

Application Notes:	Optimal working dilution should be determined by the investigator.
Restrictions:	For Research Use only

Handling

Format:	Liquid
Concentration:	0.25 mg/mL
Buffer:	PBS containing 0.09 % (W/V) Sodium Azide as preservative
Preservative:	Sodium azide
Precaution of Use:	This product contains sodium azide: a POISONOUS AND HAZARDOUS SUBSTANCE which should be handled by trained staff only.
Handling Advice:	Avoid repeated freezing and thawing.
Storage:	4 °C/-20 °C
Storage Comment:	Store undiluted at 2-8 °C for one month or (in aliquots) at -20 °C for longer.



Flow Cytometry

Image 1. Flow cytometric analysis of HeLa cells using Leptin Antibody (N-term) Cat.-No AP52465PU-N (right histogram) compared to a negative control cell (left histogram). FITC-conjugated goat-anti-rabbit secondary antibodies were used for the analysis.

Immunofluorescence

Image 2. Confocal immunofluorescent analysis of Leptin Antibody (N-term) Cat.-No AP52465PU-N with HeLa cell followed by Alexa Fluor 488-conjugated goat anti-rabbit IgG (green). DAPI was used to stain the cell nuclear (blue).

Immunohistochemistry (Paraffin-embedded Sections)

Image 3. Immunohistochemistry analysis in formalin fixed and paraffin embedded human placenta tissue reacted with Leptin Antibody (N-term) followed by peroxidase conjugation of the secondary antibody and DAB staining.

Please check the [product details page](#) for more images. Overall 5 images are available for ABIN953161.