



Datasheet for ABIN953162
anti-LETM2 antibody (N-Term)



[Go to Product page](#)

3 Images

Overview

Quantity:	0.4 mL
Target:	LETM2
Binding Specificity:	AA 108-137, N-Term
Reactivity:	Human
Host:	Rabbit
Clonality:	Polyclonal
Conjugate:	This LETM2 antibody is un-conjugated
Application:	Western Blotting (WB), Flow Cytometry (FACS), Immunohistochemistry (Paraffin-embedded Sections) (IHC (p)), Enzyme Immunoassay (EIA)

Product Details

Immunogen:	KLH conjugated synthetic peptide between 108-137 amino acids from the N-terminal region of human LETM2
Isotype:	Ig Fraction
Specificity:	This antibody recognizes Human LETM2 (N-term).
Purification:	Protein A column, followed by peptide affinity purification

Target Details

Target:	LETM2
Alternative Name:	LETM2 (LETM2 Products)

Target Details

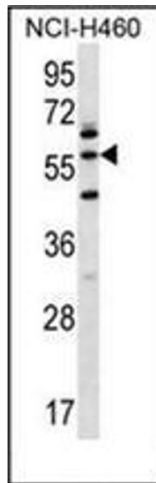
Background:	LETM2 contains 1 LETM1 domain.Synonyms: LETM1 and EF-hand domain-containing protein 2, LETM1 domain-containing protein LETM2, Leucine zipper-EF-hand-containing transmembrane protein 1-like
Molecular Weight:	55921 Da
Gene ID:	137994
NCBI Accession:	NP_001186588

Application Details

Application Notes:	Optimal working dilution should be determined by the investigator.
Restrictions:	For Research Use only

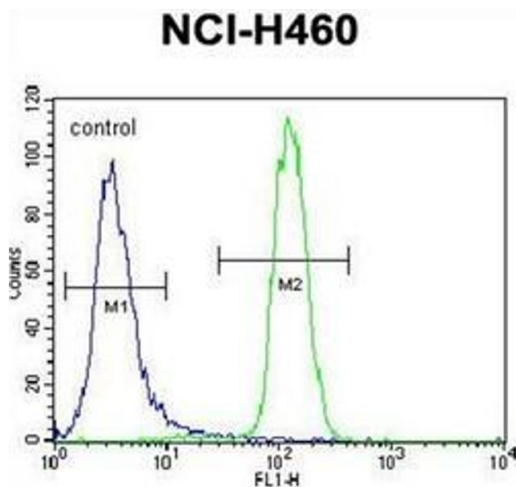
Handling

Format:	Liquid
Concentration:	0.25 mg/mL
Buffer:	PBS containing 0.09 % (W/V) Sodium Azide as preservative
Preservative:	Sodium azide
Precaution of Use:	This product contains sodium azide: a POISONOUS AND HAZARDOUS SUBSTANCE which should be handled by trained staff only.
Handling Advice:	Avoid repeated freezing and thawing.
Storage:	4 °C/-20 °C
Storage Comment:	Store undiluted at 2-8 °C for one month or (in aliquots) at -20 °C for longer.



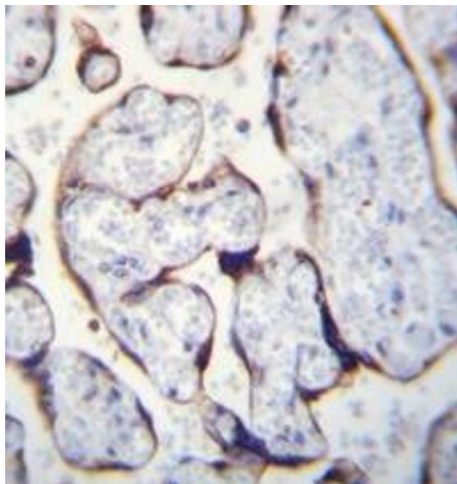
Western Blotting

Image 1. Western blot analysis of LETM2 Antibody



Flow Cytometry

Image 2. Flow cytometric analysis of NCI-H460 cells using LETM2 Antibody (N-term) Cat.-No AP52466PU-N (right histogram) compared to a negative control cell (left histogram). FITC-conjugated goat-anti-rabbit secondary antibodies were used for the analysis.



Immunohistochemistry (Paraffin-embedded Sections)

Image 3. Immunohistochemistry analysis in formalin fixed and paraffin embedded human placenta reacted with LETM2 Antibody (N-term) Cat.-No AP52466PU-N tissue followed by peroxidase conjugation of the secondary antibody and DAB staining.