

Datasheet for ABIN953167
anti-LHFPL5 antibody (C-Term)[Go to Product page](#)

1 Image

Overview

Quantity:	0.4 mL
Target:	LHFPL5
Binding Specificity:	AA 193-222, C-Term
Reactivity:	Human, Mouse
Host:	Rabbit
Clonality:	Polyclonal
Conjugate:	This LHFPL5 antibody is un-conjugated
Application:	Western Blotting (WB), Enzyme Immunoassay (EIA)

Product Details

Immunogen:	KLH conjugated synthetic peptide between 193-222 amino acids from the C-terminal region of Human LHFPL5
Isotype:	Ig Fraction
Specificity:	This antibody recognizes Human and Mouse LHFPL5 / TMHS (C-term).
Purification:	Protein A column, followed by peptide affinity purification

Target Details

Target:	LHFPL5
Alternative Name:	LHFPL5 / TMHS (LHFPL5 Products)
Background:	This gene is a member of the lipoma HMGIC fusion partner (LHFP) gene family, which is a

Target Details

subset of the superfamily of tetraspan transmembrane protein encoding genes. Mutations in this gene result in deafness in humans, and a mutation in a similar gene in mice results in deafness and vestibular dysfunction with severe degeneration of the organ of Corti. It is proposed to function in hair bundle morphogenesis. Synonyms: Lipoma HMGIC fusion partner-like 5 protein, Tetraspan membrane protein of hair cell stereocilia

Molecular Weight: 24201 Da

Gene ID: 222662

NCBI Accession: [NP_872354](#)

Pathways: [Sensory Perception of Sound](#)

Application Details

Application Notes: Optimal working dilution should be determined by the investigator.

Restrictions: For Research Use only

Handling

Format: Liquid

Concentration: 0.25 mg/mL

Buffer: PBS containing 0.09 % (W/V) Sodium Azide as preservative

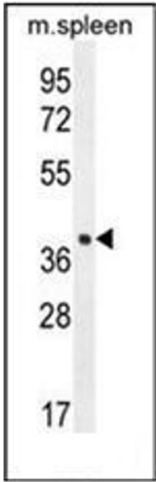
Preservative: Sodium azide

Precaution of Use: This product contains sodium azide: a POISONOUS AND HAZARDOUS SUBSTANCE which should be handled by trained staff only.

Handling Advice: Avoid repeated freezing and thawing.

Storage: 4 °C/-20 °C

Storage Comment: Store undiluted at 2-8 °C for one month or (in aliquots) at -20 °C for longer.



Western Blotting

Image 1. Western blot analysis of LHFPL5 / TMHS Antibody (C-term) in mouse spleen tissue lysates (35ug/lane). This demonstrates the LHFPL5 antibody detected the LHFPL5 protein (arrow).