



Datasheet for ABIN953178
anti-LINGO4 antibody (C-Term)



[Go to Product page](#)

2 Images

Overview

Quantity:	0.4 mL
Target:	LINGO4
Binding Specificity:	AA 550-579, C-Term
Reactivity:	Human, Mouse
Host:	Rabbit
Clonality:	Polyclonal
Conjugate:	This LINGO4 antibody is un-conjugated
Application:	Western Blotting (WB), Immunohistochemistry (Paraffin-embedded Sections) (IHC (p)), Enzyme Immunoassay (EIA)

Product Details

Immunogen:	KLH conjugated synthetic peptide between 550-579 amino acids from the C-terminal region of human LINGO4
Isotype:	Ig Fraction
Specificity:	This antibody recognizes Human and Mouse LINGO4 (C-term).
Purification:	Protein A column, followed by peptide affinity purification

Target Details

Target:	LINGO4
Alternative Name:	LINGO4 (LINGO4 Products)

Target Details

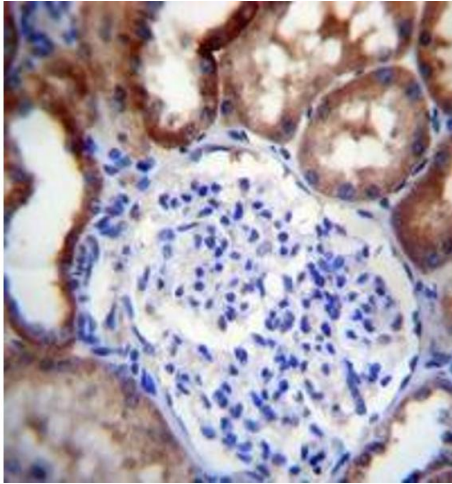
Background:	Synonyms: LRRN6D, Leucine-rich repeat and immunoglobulin-like domain-containing nogo receptor-interacting protein 4, Leucine-rich repeat neuronal protein 6D
Molecular Weight:	63774 Da
Gene ID:	339398
NCBI Accession:	NP_001004432

Application Details

Application Notes:	Optimal working dilution should be determined by the investigator.
Restrictions:	For Research Use only

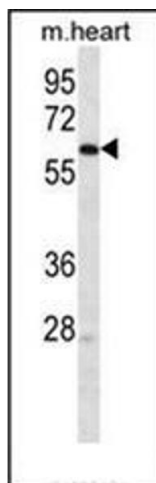
Handling

Format:	Liquid
Concentration:	0.25 mg/mL
Buffer:	PBS containing 0.09 % (W/V) Sodium Azide as preservative
Preservative:	Sodium azide
Precaution of Use:	This product contains sodium azide: a POISONOUS AND HAZARDOUS SUBSTANCE which should be handled by trained staff only.
Handling Advice:	Avoid repeated freezing and thawing.
Storage:	4 °C/-20 °C
Storage Comment:	Store undiluted at 2-8 °C for one month or (in aliquots) at -20 °C for longer.



Immunohistochemistry (Paraffin-embedded Sections)

Image 1. Immunohistochemistry analysis in formalin fixed and paraffin embedded human kidney tissue reacted with LINGO4 Antibody (C-term) followed by peroxidase conjugation of the secondary antibody and DAB staining.



Western Blotting

Image 2. Western blot analysis of LINGO4 Antibody (C-term) in mouse heart tissue lysates (35ug/lane). This demonstrates the LINGO4 antibody detected the LINGO4 protein (arrow).