

Datasheet for ABIN953185  
**anti-LIPM antibody (C-Term)**

## 2 Images

[Go to Product page](#)

## Overview

Quantity:	0.4 mL
Target:	LIPM
Binding Specificity:	AA 317-346, C-Term
Reactivity:	Human
Host:	Rabbit
Clonality:	Polyclonal
Conjugate:	This LIPM antibody is un-conjugated
Application:	Western Blotting (WB), Immunohistochemistry (Paraffin-embedded Sections) (IHC (p)), Enzyme Immunoassay (EIA)

## Product Details

Immunogen:	KLH conjugated synthetic peptide between 317-346 amino acids from the C-terminal region of Human LIPM
Isotype:	Ig Fraction
Specificity:	This antibody recognizes Human LIPM (C-term).
Purification:	Protein A column, followed by peptide affinity purification

## Target Details

Target:	LIPM
Alternative Name:	LIPM ( <a href="#">LIPM Products</a> )

## Target Details

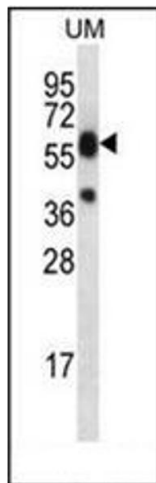
Background:	LIPM plays a highly specific role in the last step of keratinocyte differentiation. May have an essential function in lipid metabolism of the most differentiated epidermal layers.Synonyms: LIPL3, Lipase member M
Molecular Weight:	48233 Da
Gene ID:	340654
NCBI Accession:	<a href="#">NP_001121687</a>

## Application Details

Application Notes:	Optimal working dilution should be determined by the investigator.
Restrictions:	For Research Use only

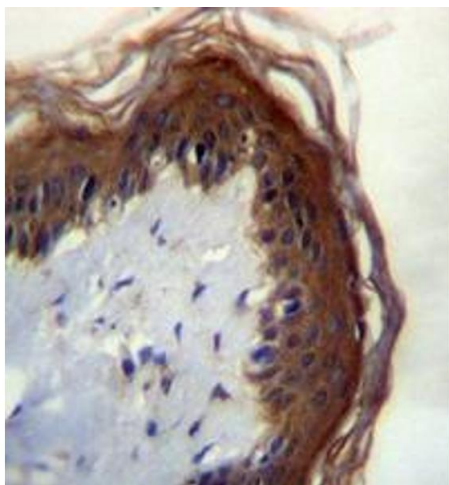
## Handling

Format:	Liquid
Concentration:	0.25 mg/mL
Buffer:	PBS containing 0.09 % (W/V) Sodium Azide as preservative
Preservative:	Sodium azide
Precaution of Use:	This product contains sodium azide: a POISONOUS AND HAZARDOUS SUBSTANCE which should be handled by trained staff only.
Handling Advice:	Avoid repeated freezing and thawing.
Storage:	4 °C/-20 °C
Storage Comment:	Store undiluted at 2-8 °C for one month or (in aliquots) at -20 °C for longer.



### Western Blotting

**Image 1.** Western blot analysis of LIPM Antibody (C-term) in UM cell line lysates (35ug/lane). This demonstrates the LIPM antibody detected the LIPM protein (arrow).



### Immunohistochemistry (Paraffin-embedded Sections)

**Image 2.** Immunohistochemistry analysis in formalin fixed and paraffin embedded human skin tissue reacted with LIPM Antibody (C-term) followed by peroxidase conjugation of the secondary antibody and DAB staining.