

Datasheet for ABIN953186  
**anti-LIPN antibody (C-Term)**[Go to Product page](#)

## 1 Image

## Overview

Quantity:	0.4 mL
Target:	LIPN
Binding Specificity:	AA 278-308, C-Term
Reactivity:	Human
Host:	Rabbit
Clonality:	Polyclonal
Conjugate:	This LIPN antibody is un-conjugated
Application:	Western Blotting (WB), Enzyme Immunoassay (EIA)

## Product Details

Immunogen:	KLH conjugated synthetic peptide between 278-308 amino acids from the C-terminal region of human LIPN
Isotype:	Ig Fraction
Specificity:	This antibody recognizes Human LIPN (C-term).
Purification:	Protein A column, followed by peptide affinity purification

## Target Details

Target:	LIPN
Alternative Name:	LIPN ( <a href="#">LIPN Products</a> )
Background:	LIPN plays a highly specific role in the last step of keratinocyte differentiation. May have an

## Target Details

essential function in lipid metabolism of the most differentiated epidermal layers.Synonyms:  
LIPL4, Lipase member N

Molecular Weight: 45534 Da

Gene ID: 643418

NCBI Accession: [NP\\_001095939](#)

## Application Details

Application Notes: Optimal working dilution should be determined by the investigator.

Restrictions: For Research Use only

## Handling

Format: Liquid

Concentration: 0.25 mg/mL

Buffer: PBS containing 0.09 % (W/V) Sodium Azide as preservative

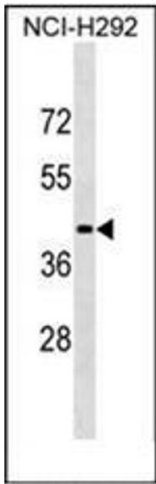
Preservative: Sodium azide

Precaution of Use: This product contains sodium azide: a POISONOUS AND HAZARDOUS SUBSTANCE which should be handled by trained staff only.

Handling Advice: Avoid repeated freezing and thawing.

Storage: 4 °C/-20 °C

Storage Comment: Store undiluted at 2-8 °C for one month or (in aliquots) at -20 °C for longer.



Western Blotting

**Image 1.** Western blot analysis of LIPN Antibody (C-term) in NCI-H292 cell line lysates (35ug/lane). This demonstrates the LIPN antibody detected the LIPN protein (arrow).