

Datasheet for ABIN953192

anti-LLPH antibody (Middle Region)[Go to Product page](#)**1** Image

Overview

| | |
|----------------------|---|
| Quantity: | 0.4 mL |
| Target: | LLPH |
| Binding Specificity: | AA 65-94, Middle Region |
| Reactivity: | Human |
| Host: | Rabbit |
| Clonality: | Polyclonal |
| Conjugate: | This LLPH antibody is un-conjugated |
| Application: | Western Blotting (WB), Enzyme Immunoassay (EIA) |

Product Details

| | |
|---------------|--|
| Immunogen: | KLH conjugated synthetic peptide between 65-94 amino acids from the Central region of human LLPH |
| Isotype: | Ig Fraction |
| Specificity: | This antibody recognizes Human LLPH (Center). |
| Purification: | Protein A column, followed by peptide affinity purification |

Target Details

| | |
|-------------------|---|
| Target: | LLPH |
| Alternative Name: | LLPH (LLPH Products) |
| Background: | Synonyms: C12orf31, Protein LLP homolog |

Target Details

| | |
|-------------------|---------------------------|
| Molecular Weight: | 15225 Da |
| Gene ID: | 84298 |
| NCBI Accession: | NP_115714 |

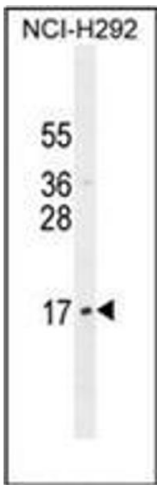
Application Details

| | |
|--------------------|--|
| Application Notes: | Optimal working dilution should be determined by the investigator. |
| Restrictions: | For Research Use only |

Handling

| | |
|--------------------|--|
| Format: | Liquid |
| Concentration: | 0.25 mg/mL |
| Buffer: | PBS containing 0.09 % (W/V) Sodium Azide as preservative |
| Preservative: | Sodium azide |
| Precaution of Use: | This product contains sodium azide: a POISONOUS AND HAZARDOUS SUBSTANCE which should be handled by trained staff only. |
| Handling Advice: | Avoid repeated freezing and thawing. |
| Storage: | 4 °C/-20 °C |
| Storage Comment: | Store undiluted at 2-8 °C for one month or (in aliquots) at -20 °C for longer. |

Images



Western Blotting

Image 1. Western blot analysis of LLPH Antibody (Center) in NCI-H292 cell line lysates (35ug/lane). This demonstrates the LLPH antibody detected the LLPH protein (arrow).