

Datasheet for ABIN953198
anti-LMTK3 antibody (N-Term)[Go to Product page](#)

2 Images

Overview

Quantity:	0.4 mL
Target:	LMTK3
Binding Specificity:	AA 320-350, N-Term
Reactivity:	Human, Mouse
Host:	Rabbit
Clonality:	Polyclonal
Conjugate:	This LMTK3 antibody is un-conjugated
Application:	Western Blotting (WB), Enzyme Immunoassay (EIA)

Product Details

Immunogen:	KLH conjugated synthetic peptide between 320-350 amino acids from the N-terminal region of human LMTK3
Isotype:	Ig Fraction
Purification:	Protein A column, followed by peptide affinity purification

Target Details

Target:	LMTK3
Alternative Name:	LMTK3 (LMTK3 Products)
Background:	Synonyms: EC=2.7.11.1, KIAA1883, LMTK-3, Lemur tyrosine kinase 3, Serine/threonine-protein kinase LMTK3, TYKLM3

Target Details

Molecular Weight: 153,661 Da

Gene ID: 9606

Application Details

Application Notes: Optimal working dilution should be determined by the investigator.

Restrictions: For Research Use only

Handling

Format: Liquid

Concentration: 0.25 mg/mL

Buffer: PBS containing 0.09 % (W/V) Sodium Azide as preservative

Preservative: Sodium azide

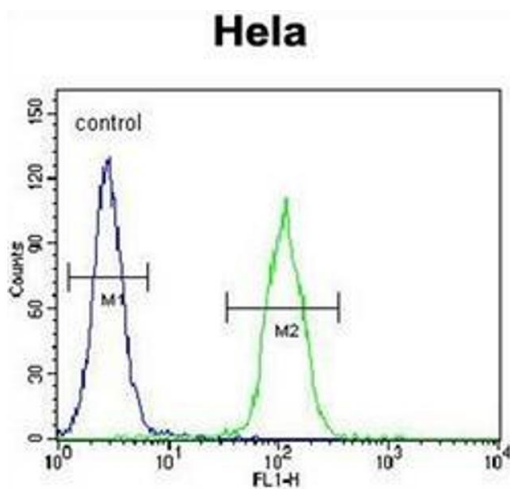
Precaution of Use: This product contains sodium azide: a POISONOUS AND HAZARDOUS SUBSTANCE which should be handled by trained staff only.

Handling Advice: Avoid repeated freezing and thawing.

Storage: 4 °C/-20 °C

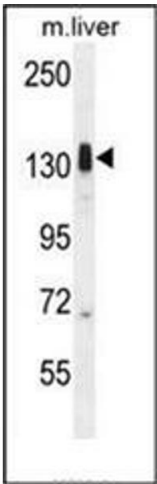
Storage Comment: Store undiluted at 2-8 °C for one month or (in aliquots) at -20 °C for longer.

Images



Flow Cytometry

Image 1. Flow cytometric analysis of Hela cells using LMTK3 Antibody (N-term) Cat.-No AP52509PU-N (right histogram) compared to a negative control cell (left histogram). FITC-conjugated goat-anti-rabbit secondary antibodies were used for the analysis.



Western Blotting

Image 2. Western blot analysis of LMTK3 Antibody (N-term) in mouse liver tissue lysates (35ug/lane). This demonstrates the LMTK3 antibody detected the LMTK3 protein (arrow).