

Datasheet for ABIN953199  
**anti-LNPEP antibody (N-Term)**

## 3 Images

[Go to Product page](#)

## Overview

Quantity:	0.4 mL
Target:	LNPEP
Binding Specificity:	AA 16-46, N-Term
Reactivity:	Human
Host:	Rabbit
Clonality:	Polyclonal
Conjugate:	This LNPEP antibody is un-conjugated
Application:	Western Blotting (WB), Flow Cytometry (FACS), Immunohistochemistry (Paraffin-embedded Sections) (IHC (p)), Enzyme Immunoassay (EIA)

## Product Details

Immunogen:	KLH conjugated synthetic peptide between 16-46 amino acids from the N-terminal region of Human LNPEP. Genename: LNPEP
Isotype:	Ig Fraction
Specificity:	This antibody recognizes Human LNPEP (N-Term).
Purification:	Affinity Chromatography on Protein A

## Target Details

Target:	LNPEP
Alternative Name:	LNPEP ( <a href="#">LNPEP Products</a> )

## Target Details

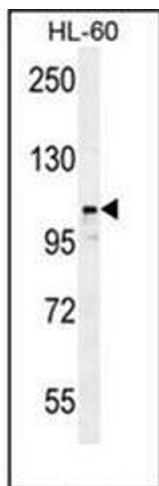
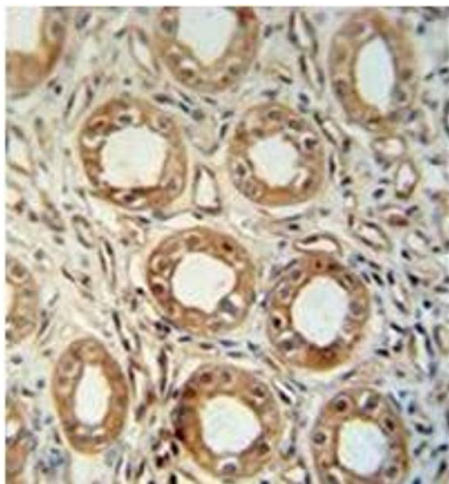
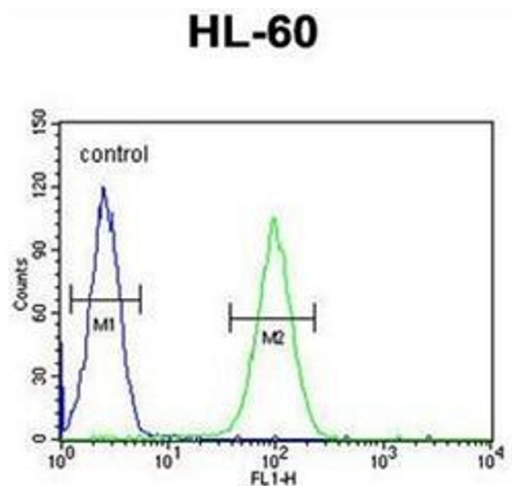
Background:	This gene encodes a zinc-dependent aminopeptidase that cleaves vasopressin, oxytocin, lys-bradykinin, met-enkephalin, dynorphin A and other peptide hormones. The protein can be secreted in maternal serum, reside in intracellular vesicles with the insulin-responsive glucose transporter GLUT4, or form a type II integral membrane glycoprotein. The protein catalyzes the final step in the conversion of angiotensinogen to angiotensin IV (AT4) and is also a receptor for AT4. Alternative splicing results in multiple transcript variants encoding different isoforms. [provided by RefSeq].Synonyms: Cystinyl aminopeptidase, EC=3.4.11.3, IRAP, Insulin-regulated membrane aminopeptidase, Insulin-responsive aminopeptidase, LNPEP, Leucyl-cystinyl aminopeptidase, OTASE, Oxytocinase, P-LAP, Placental leucine aminopeptidase
Molecular Weight:	117349 Da
Gene ID:	4012
NCBI Accession:	<a href="#">NP_005566</a>
Pathways:	<a href="#">Regulation of long-term Neuronal Synaptic Plasticity</a>

## Application Details

Application Notes:	Optimal working dilution should be determined by the investigator.
Restrictions:	For Research Use only

## Handling

Format:	Liquid
Concentration:	0.25 mg/mL
Buffer:	PBS, 0.09 % Sodium Azide
Preservative:	Sodium azide
Precaution of Use:	This product contains sodium azide: a POISONOUS AND HAZARDOUS SUBSTANCE which should be handled by trained staff only.
Handling Advice:	Avoid repeated freezing and thawing.
Storage:	4 °C/-20 °C
Storage Comment:	Store undiluted at 2-8 °C for one month or (in aliquots) at -20 °C for longer.



### Flow Cytometry

**Image 1.** Flow cytometric analysis of HL-60 cells using LNPEP Antibody (N-Term) Cat.-No AP52510PU-N (right histogram) compared to a negative control cell (left histogram). FITC-conjugated Goat anti Rabbit secondary antibodies were used for the analysis.

### Immunohistochemistry (Paraffin-embedded Sections)

**Image 2.** Formalin fixed, paraffin embedded Human kidney tissue stained with LNPEP Antibody (N-Term) followed by peroxidase conjugation of the secondary antibody and DAB staining.

### Western Blotting

**Image 3.** Western blot analysis of LNPEP Antibody (N-Term) in HL-60 cell line lysates (35ug/lane). This demonstrates the LNPEP antibody detected the LNPEP protein (arrow).