

Datasheet for ABIN953203  
**anti-LOXL3 antibody (C-Term)**

## 2 Images

[Go to Product page](#)

## Overview

Quantity:	0.4 mL
Target:	LOXL3
Binding Specificity:	AA 722-752, C-Term
Reactivity:	Human
Host:	Rabbit
Clonality:	Polyclonal
Conjugate:	This LOXL3 antibody is un-conjugated
Application:	Western Blotting (WB), Immunohistochemistry (Paraffin-embedded Sections) (IHC (p)), Enzyme Immunoassay (EIA)

## Product Details

Immunogen:	KLH conjugated synthetic peptide between 722-752 amino acids from the C-terminal region of human LOXL3
Isotype:	Ig Fraction
Specificity:	This antibody recognizes Human LOXL3 (C-term).
Purification:	Protein A column, followed by peptide affinity purification

## Target Details

Target:	LOXL3
Alternative Name:	LOXL3 ( <a href="#">LOXL3 Products</a> )

## Target Details

**Background:** This gene encodes a member of the lysyl oxidase gene family. The prototypic member of the family is essential to the biogenesis of connective tissue, encoding an extracellular copper-dependent amine oxidase that catalyses the first step in the formation of crosslinks in collagens and elastin. A highly conserved amino acid sequence at the C-terminus end appears to be sufficient for amine oxidase activity, suggesting that each family member may retain this function. The N-terminus is poorly conserved and may impart additional roles in developmental regulation, senescence, tumor suppression, cell growth control, and chemotaxis to each member of the family. Alternatively spliced transcript variants of this gene have been reported but their full-length nature has not been determined. Synonyms: LOXL, Lysyl oxidase homolog 3, Lysyl oxidase-like protein 3

**Molecular Weight:** 83166 Da

**Gene ID:** 84695

**NCBI Accession:** [NP\\_115992](#)

## Application Details

**Application Notes:** Optimal working dilution should be determined by the investigator.

**Restrictions:** For Research Use only

## Handling

**Format:** Liquid

**Concentration:** 0.25 mg/mL

**Buffer:** PBS containing 0.09 % (W/V) Sodium Azide as preservative

**Preservative:** Sodium azide

**Precaution of Use:** This product contains sodium azide: a POISONOUS AND HAZARDOUS SUBSTANCE which should be handled by trained staff only.

**Handling Advice:** Avoid repeated freezing and thawing.

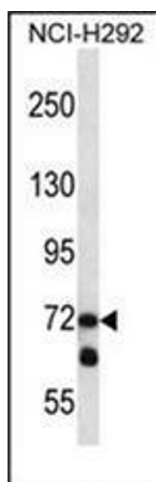
**Storage:** 4 °C/-20 °C

**Storage Comment:** Store undiluted at 2-8 °C for one month or (in aliquots) at -20 °C for longer.



#### Immunohistochemistry (Paraffin-embedded Sections)

**Image 1.** Immunohistochemistry analysis in formalin fixed and paraffin embedded human placenta tissue reacted with LOXL3 Antibody (C-term) followed by peroxidase conjugation of the secondary antibody and DAB staining.



#### Western Blotting

**Image 2.** Western blot analysis of LOXL3 Antibody (C-term) in NCI-H292 cell line lysates (35ug/lane). This demonstrates the LOXL3 antibody detected the LOXL3 protein (arrow).