

Datasheet for ABIN953206
anti-LPPR5 antibody (Middle Region)[Go to Product page](#)

1 Image

Overview

Quantity:	0.4 mL
Target:	LPPR5
Binding Specificity:	AA 77-106, Middle Region
Reactivity:	Human
Host:	Rabbit
Clonality:	Polyclonal
Conjugate:	This LPPR5 antibody is un-conjugated
Application:	Western Blotting (WB), Enzyme Immunoassay (EIA)

Product Details

Immunogen:	KLH conjugated synthetic peptide between 77-106 amino acids from the Central region of Human LPR5 / PAP2D
Isotype:	Ig Fraction
Specificity:	This antibody recognizes Human LPPR5 / PAP2D (Center).
Purification:	Protein A column, followed by peptide affinity purification

Target Details

Target:	LPPR5
Alternative Name:	LPPR5 / PAP2D (LPPR5 Products)
Background:	PAP2D is a type 2 member of the phosphatidic acid phosphatase (PAP) family. All type 2

Target Details

members of this protein family contain 6 transmembrane regions, and a consensus N-glycosylation site. PAPs convert phosphatidic acid to diacylglycerol, and function in de novo synthesis of glycerolipids as well as in receptor-activated signal transduction mediated by phospholipase D. Alternate transcriptional splice variants, encoding different isoforms, have been characterized. [provided by RefSeq].Synonyms: Lipid phosphate phosphatase-related protein type 5, PRG-5, Phosphatidic acid phosphatase 2d, Plasticity-related gene 5 protein

Molecular Weight: 35427 Da

Gene ID: 163404

NCBI Accession: [NP_001010861](#)

Application Details

Application Notes: Optimal working dilution should be determined by the investigator.

Restrictions: For Research Use only

Handling

Format: Liquid

Concentration: 0.25 mg/mL

Buffer: PBS containing 0.09 % (W/V) Sodium Azide as preservative

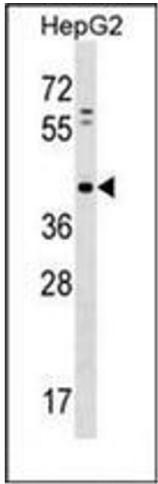
Preservative: Sodium azide

Precaution of Use: This product contains sodium azide: a POISONOUS AND HAZARDOUS SUBSTANCE which should be handled by trained staff only.

Handling Advice: Avoid repeated freezing and thawing.

Storage: 4 °C/-20 °C

Storage Comment: Store undiluted at 2-8 °C for one month or (in aliquots) at -20 °C for longer.



Western Blotting

Image 1. Western blot analysis of PAP2D Antibody (Center) in HepG2 cell line lysates (35ug/lane). This demonstrates the PAP2D antibody detected the PAP2D protein (arrow).