



Datasheet for ABIN953207
anti-LRIT1 antibody (C-Term)



[Go to Product page](#)

2 Images

Overview

| | |
|----------------------|--|
| Quantity: | 0.4 mL |
| Target: | LRIT1 |
| Binding Specificity: | AA 601-623, C-Term |
| Reactivity: | Human |
| Host: | Rabbit |
| Clonality: | Polyclonal |
| Conjugate: | This LRIT1 antibody is un-conjugated |
| Application: | Western Blotting (WB), Flow Cytometry (FACS), Enzyme Immunoassay (EIA) |

Product Details

| | |
|---------------|--|
| Immunogen: | KLH conjugated synthetic peptide between 601-623 amino acids from the C-terminal region of human LRIT1 |
| Isotype: | Ig Fraction |
| Specificity: | This antibody recognizes Human LRIT1 (C-term). |
| Purification: | Protein A column, followed by peptide affinity purification |

Target Details

| | |
|-------------------|--|
| Target: | LRIT1 |
| Alternative Name: | LRIT1 (LRIT1 Products) |
| Background: | Possible role in phototransduction.Synonyms: LRRC21, Leucine-rich repeat, PAL, |

Target Details

immunoglobulin-like domain and transmembrane domain-containing protein 1

Molecular Weight: 68041 Da

Gene ID: 26103

NCBI Accession: [NP_056428](#)

Application Details

Application Notes: Optimal working dilution should be determined by the investigator.

Restrictions: For Research Use only

Handling

Format: Liquid

Concentration: 0.25 mg/mL

Buffer: PBS containing 0.09 % (W/V) Sodium Azide as preservative

Preservative: Sodium azide

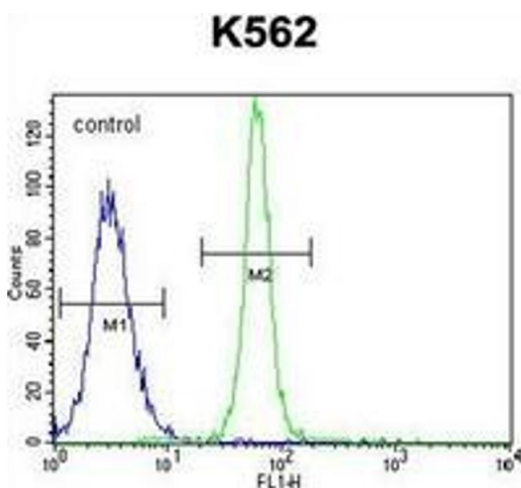
Precaution of Use: This product contains sodium azide: a POISONOUS AND HAZARDOUS SUBSTANCE which should be handled by trained staff only.

Handling Advice: Avoid repeated freezing and thawing.

Storage: 4 °C/-20 °C

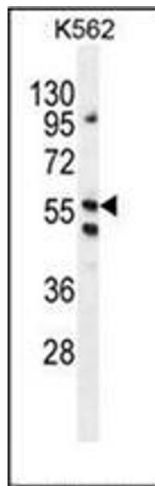
Storage Comment: Store undiluted at 2-8 °C for one month or (in aliquots) at -20 °C for longer.

Images



Flow Cytometry

Image 1. Flow cytometric analysis of K562 cells using LRIT1 Antibody (C-term) Cat.-No AP52524PU-N (right histogram) compared to a negative control cell (left histogram). FITC-conjugated goat-anti-rabbit secondary antibodies were used for the analysis.



Western Blotting

Image 2. Western blot analysis of LRIT1 Antibody (C-term) in K562 cell line lysates (35ug/lane). This demonstrates the LRIT1 antibody detected the LRIT1 protein (arrow).