

Datasheet for ABIN953212
anti-LRRC18 antibody (C-Term)

2 Images



[Go to Product page](#)

Overview

Quantity:	0.4 mL
Target:	LRRC18
Binding Specificity:	AA 156-185, C-Term
Reactivity:	Human, Mouse
Host:	Rabbit
Clonality:	Polyclonal
Conjugate:	This LRRC18 antibody is un-conjugated
Application:	Western Blotting (WB), Immunohistochemistry (Paraffin-embedded Sections) (IHC (p)), Enzyme Immunoassay (EIA)

Product Details

Immunogen:	KLH conjugated synthetic peptide between 156-185 amino acids from the C-terminal region of human LRC18.
Isotype:	Ig Fraction
Specificity:	This antibody reacts to the C-term of LRC18.
Cross-Reactivity (Details):	Species reactivity (tested): Human and Mouse.
Purification:	Affinity chromatography on Protein A

Target Details

Target:	LRRC18
---------	--------

Target Details

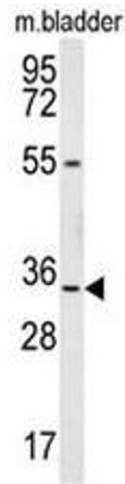
Alternative Name:	LRRC18 (LRRC18 Products)
Background:	May be involved in the regulation of spermatogenesis and sperm maturation (By similarity).Synonyms: Leucine-rich repeat-containing protein 18
Molecular Weight:	29737 Da
Gene ID:	474354
NCBI Accession:	NP_001006940

Application Details

Application Notes:	Optimal working dilution should be determined by the investigator.
Restrictions:	For Research Use only

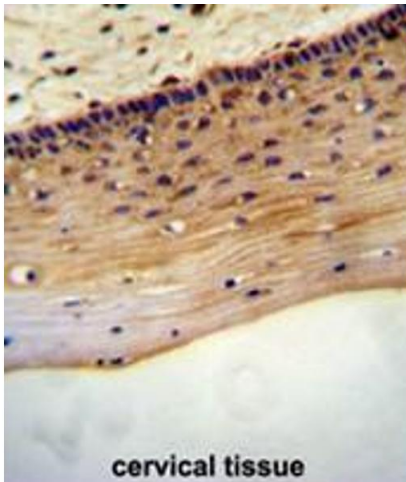
Handling

Format:	Liquid
Concentration:	0.25 mg/mL
Buffer:	PBS, 0,09 % sodium azide
Preservative:	Sodium azide
Precaution of Use:	This product contains sodium azide: a POISONOUS AND HAZARDOUS SUBSTANCE which should be handled by trained staff only.
Handling Advice:	Avoid repeated freezing and thawing.
Storage:	4 °C/-20 °C
Storage Comment:	Store the antibody undiluted at 2-8 °C for one month or (in aliquots) at -20 °C for longer.



Western Blotting

Image 1. LRC18 Antibody (C-term) western blot analysis in mouse bladder tissue lysates (35µg/lane). This demonstrates the LRC18 antibody detected the LRC18 protein (arrow).



Immunohistochemistry (Paraffin-embedded Sections)

Image 2. LRC18 antibody (C-term) immunohistochemistry analysis in formalin fixed and paraffin embedded human cervical tissue followed by peroxidase conjugation of the secondary antibody and DAB staining. This data demonstrates the use of the LRC18 antibody (C-term) for immunohistochemistry. Clinical relevance has not been evaluated.