

Datasheet for ABIN953215  
**anti-LRRC26 antibody (C-Term)**[Go to Product page](#)

## 1 Image

## Overview

Quantity:	0.4 mL
Target:	LRRC26
Binding Specificity:	AA 288-319, C-Term
Reactivity:	Human
Host:	Rabbit
Clonality:	Polyclonal
Conjugate:	This LRRC26 antibody is un-conjugated
Application:	Western Blotting (WB), Enzyme Immunoassay (EIA)

## Product Details

Immunogen:	KLH conjugated synthetic peptide between 288-319 amino acids from the C-terminal region of human LRRC26
Isotype:	Ig Fraction
Specificity:	This antibody recognizes Human LRRC26 (C-term).
Purification:	Protein A column, followed by peptide affinity purification

## Target Details

Target:	LRRC26
Alternative Name:	LRRC26 ( <a href="#">LRRC26 Products</a> )
Background:	Auxiliary protein of the large-conductance, voltage and calcium-activated potassium channel

## Target Details

(BK alpha). Required for the conversion of BK alpha channels from a high-voltage to a low-voltage activated channel type in non-excitabile cells. These are characterized by negative membrane voltages and constant low levels of calcium. Synonyms: CAPC, Cytokeratin-associated protein in cancer, Leucine-rich repeat-containing protein 26

Molecular Weight: 34857 Da

Gene ID: 389816

NCBI Accession: [NP\\_001013675](#)

## Application Details

Application Notes: Optimal working dilution should be determined by the investigator.

Restrictions: For Research Use only

## Handling

Format: Liquid

Concentration: 0.25 mg/mL

Buffer: PBS containing 0.09 % (W/V) Sodium Azide as preservative

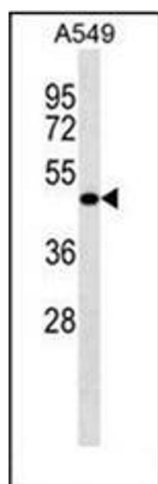
Preservative: Sodium azide

Precaution of Use: This product contains sodium azide: a POISONOUS AND HAZARDOUS SUBSTANCE which should be handled by trained staff only.

Handling Advice: Avoid repeated freezing and thawing.

Storage: 4 °C/-20 °C

Storage Comment: Store undiluted at 2-8 °C for one month or (in aliquots) at -20 °C for longer.



#### Western Blotting

**Image 1.** Western blot analysis of LRRC26 Antibody (C-term) in A549 cell line lysates (35ug/lane). This demonstrates the LRRC26 antibody detected the LRRC26 protein (arrow).