



[Go to Product page](#)

Datasheet for ABIN953216

## anti-LRRC28 antibody (C-Term)

### 2 Images

#### Overview

Quantity:	0.4 mL
Target:	LRRC28
Binding Specificity:	AA 313-342, C-Term
Reactivity:	Human, Mouse
Host:	Rabbit
Clonality:	Polyclonal
Conjugate:	This LRRC28 antibody is un-conjugated
Application:	Western Blotting (WB), Immunohistochemistry (Paraffin-embedded Sections) (IHC (p)), Enzyme Immunoassay (EIA)

#### Product Details

Immunogen:	KLH conjugated synthetic peptide between 313-342 amino acids from the C-terminal region of human LRRC28
Isotype:	Ig Fraction
Specificity:	This antibody recognizes Human and Mouse LRRC28 (C-term).
Purification:	Protein A column, followed by peptide affinity purification

#### Target Details

Target:	LRRC28
Alternative Name:	LRRC28 ( <a href="#">LRRC28 Products</a> )

## Target Details

---

Background:	LRRC28 contains 11 LRR (leucine-rich) repeats. The function of the LRRC28 protein is not known.Synonyms: Leucine-rich repeat-containing protein 28
Molecular Weight:	41912 Da
Gene ID:	123355
NCBI Accession:	<a href="#">NP_653199</a>

## Application Details

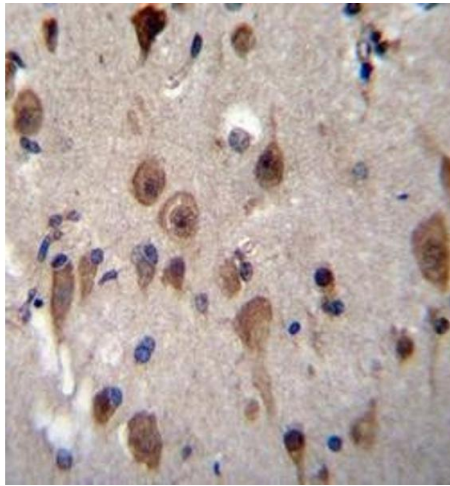
---

Application Notes:	Optimal working dilution should be determined by the investigator.
Restrictions:	For Research Use only

## Handling

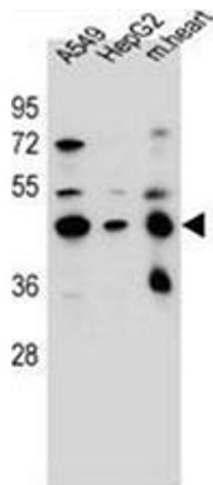
---

Format:	Liquid
Concentration:	0.25 mg/mL
Buffer:	PBS containing 0.09 % (W/V) Sodium Azide as preservative
Preservative:	Sodium azide
Precaution of Use:	This product contains sodium azide: a POISONOUS AND HAZARDOUS SUBSTANCE which should be handled by trained staff only.
Handling Advice:	Avoid repeated freezing and thawing.
Storage:	4 °C/-20 °C
Storage Comment:	Store undiluted at 2-8 °C for one month or (in aliquots) at -20 °C for longer.



### Immunohistochemistry (Paraffin-embedded Sections)

**Image 1.** Immunohistochemistry analysis in formalin fixed and paraffin embedded human brain tissue reacted with LRRRC28 Antibody (C-term) followed by peroxidase conjugation of the secondary antibody and DAB staining.



### Western Blotting

**Image 2.** Western blot analysis of LRRRC28 Antibody (C-term) in A549, HepG2 cell line and mouse heart tissue lysates (35ug/lane). This demonstrates the LRRRC28 antibody detected the LRRRC28 protein (arrow).