

Datasheet for ABIN953220
anti-LRRC38 antibody (C-Term)

3 Images

[Go to Product page](#)

Overview

Quantity:	0.4 mL
Target:	LRRC38
Binding Specificity:	AA 195-225, C-Term
Reactivity:	Human
Host:	Rabbit
Clonality:	Polyclonal
Conjugate:	This LRRC38 antibody is un-conjugated
Application:	Western Blotting (WB), Flow Cytometry (FACS), Immunohistochemistry (Paraffin-embedded Sections) (IHC (p)), Enzyme Immunoassay (EIA)

Product Details

Immunogen:	KLH conjugated synthetic peptide between 195-225 amino acids from the C-terminal region of human LRRC38
Isotype:	Ig Fraction
Specificity:	This antibody recognizes Human LRRC38 (C-term).
Purification:	Protein A column, followed by peptide affinity purification

Target Details

Target:	LRRC38
Alternative Name:	LRRC38 (LRRC38 Products)

Target Details

Background:	Synonyms: Leucine-rich repeat-containing protein 38
Molecular Weight:	32082 Da
Gene ID:	126755
NCBI Accession:	NP_001010847

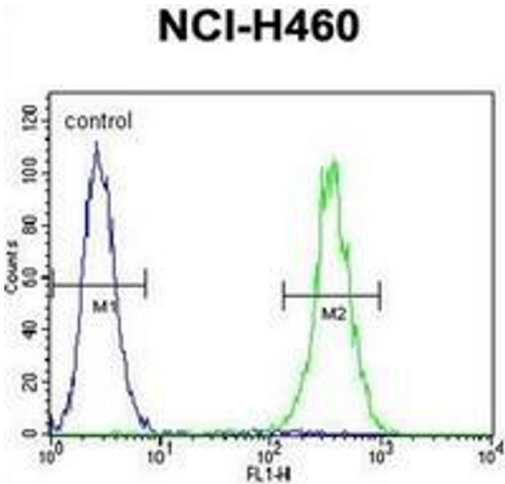
Application Details

Application Notes:	Optimal working dilution should be determined by the investigator.
Restrictions:	For Research Use only

Handling

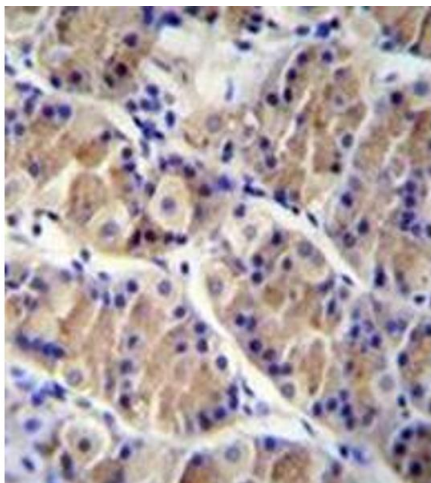
Format:	Liquid
Concentration:	0.25 mg/mL
Buffer:	PBS containing 0.09 % (W/V) Sodium Azide as preservative
Preservative:	Sodium azide
Precaution of Use:	This product contains sodium azide: a POISONOUS AND HAZARDOUS SUBSTANCE which should be handled by trained staff only.
Handling Advice:	Avoid repeated freezing and thawing.
Storage:	4 °C/-20 °C
Storage Comment:	Store undiluted at 2-8 °C for one month or (in aliquots) at -20 °C for longer.

Images



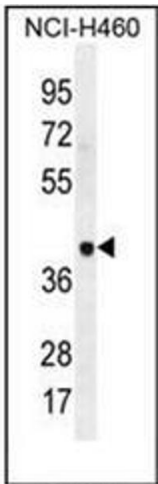
Flow Cytometry

Image 1. Flow cytometric analysis of NCI-H460 cells using LRRC38 Antibody (C-term) Cat.-No AP52534PU-N (right histogram) compared to a negative control cell (left histogram). FITC-conjugated goat-anti-rabbit secondary antibodies were used for the analysis.



Immunohistochemistry (Paraffin-embedded Sections)

Image 2. Immunohistochemistry analysis in formalin fixed and paraffin embedded human stomach tissue reacted with LRRC38 Antibody (C-term) followed by peroxidase conjugation of the secondary antibody and DAB staining.



Western Blotting

Image 3. Western blot analysis of LRRC38 Antibody (C-term) in NCI-H460 cell line lysates (35ug/lane). This demonstrates the LRRC38 antibody detected the LRRC38 protein (arrow).