



[Go to Product page](#)

Datasheet for ABIN953221
anti-LRRC4 antibody (C-Term)

2 Images

Overview

Quantity:	0.4 mL
Target:	LRRC4
Binding Specificity:	AA 536-565, C-Term
Reactivity:	Human
Host:	Rabbit
Clonality:	Polyclonal
Conjugate:	This LRRC4 antibody is un-conjugated
Application:	Western Blotting (WB), Immunohistochemistry (Paraffin-embedded Sections) (IHC (p)), Enzyme Immunoassay (EIA)

Product Details

Immunogen:	KLH conjugated synthetic peptide between 536~565 amino acids from the C-terminal region of human LRRC4
Isotype:	Ig Fraction
Specificity:	This antibody recognizes Human LRRC4 (C-term).
Purification:	Protein A column, followed by peptide affinity purification

Target Details

Target:	LRRC4
Alternative Name:	LRRC4 (LRRC4 Products)

Target Details

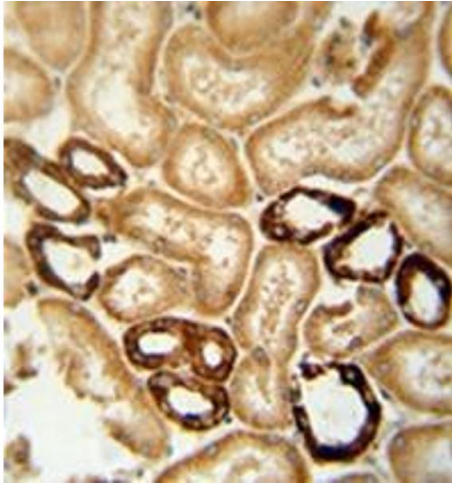
Background:	Synonyms: BAG, Brain tumor-associated protein BAG, Leucine-rich repeat-containing protein 4, NAG14, NGL-2, Nasopharyngeal carcinoma-associated gene 14 protein, Netrin-G2 ligand, UNQ554/PRO1111
Molecular Weight:	72717 Da
Gene ID:	64101
NCBI Accession:	NP_071426
Pathways:	Synaptic Membrane

Application Details

Application Notes:	Optimal working dilution should be determined by the investigator.
Restrictions:	For Research Use only

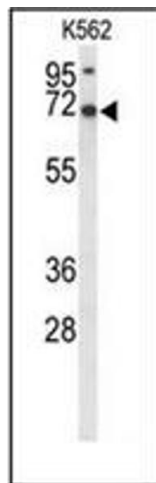
Handling

Format:	Liquid
Concentration:	0.25 mg/mL
Buffer:	PBS containing 0.09 % (W/V) Sodium Azide as preservative
Preservative:	Sodium azide
Precaution of Use:	This product contains sodium azide: a POISONOUS AND HAZARDOUS SUBSTANCE which should be handled by trained staff only.
Handling Advice:	Avoid repeated freezing and thawing.
Storage:	4 °C/-20 °C
Storage Comment:	Store undiluted at 2-8 °C for one month or (in aliquots) at -20 °C for longer.



Immunohistochemistry (Paraffin-embedded Sections)

Image 1. Formalin-fixed and paraffin-embedded human brain tissue reacted with LRRC4 Antibody (C-term) followed which was peroxidase-conjugated to the secondary antibody, followed by DAB staining.



Western Blotting

Image 2. Western blot analysis of LRRC4 Antibody (C-term) in K562 cell line lysates (35ug/lane). LRRC4 (arrow) was detected using the purified Pab.