



[Go to Product page](#)

Datasheet for ABIN953225
anti-LRRC45 antibody (C-Term)

4 Images

Overview

Quantity:	0.4 mL
Target:	LRRC45
Binding Specificity:	AA 622-651, C-Term
Reactivity:	Human
Host:	Rabbit
Clonality:	Polyclonal
Conjugate:	This LRRC45 antibody is un-conjugated
Application:	Western Blotting (WB), Flow Cytometry (FACS), Immunofluorescence (IF), Immunohistochemistry (Paraffin-embedded Sections) (IHC (p)), Enzyme Immunoassay (EIA)

Product Details

Immunogen:	KLH conjugated synthetic peptide between 622-651 amino acids from the C-terminal region of human LRRC45
Isotype:	Ig Fraction
Specificity:	This antibody recognizes Human LRRC45 (C-term).
Purification:	Protein A column, followed by peptide affinity purification

Target Details

Target:	LRRC45
Alternative Name:	LRRC45 (LRRC45 Products)

Target Details

Background: Synonyms: Leucine-rich repeat-containing protein 45

Molecular Weight: 75951 Da

Gene ID: 201255

NCBI Accession: [NP_659436](#)

Application Details

Application Notes: Optimal working dilution should be determined by the investigator.

Restrictions: For Research Use only

Handling

Format: Liquid

Concentration: 0.25 mg/mL

Buffer: PBS containing 0.09 % (W/V) Sodium Azide as preservative

Preservative: Sodium azide

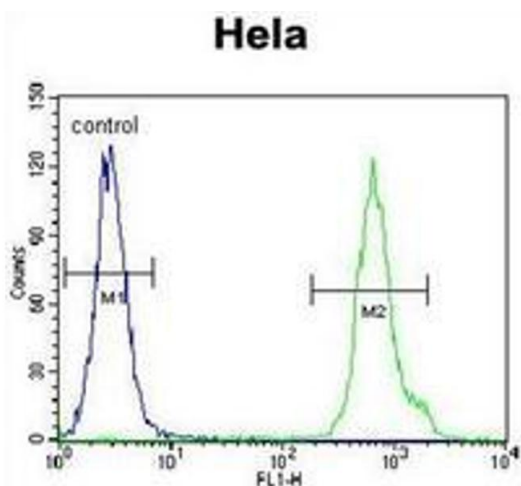
Precaution of Use: This product contains sodium azide: a POISONOUS AND HAZARDOUS SUBSTANCE which should be handled by trained staff only.

Handling Advice: Avoid repeated freezing and thawing.

Storage: 4 °C/-20 °C

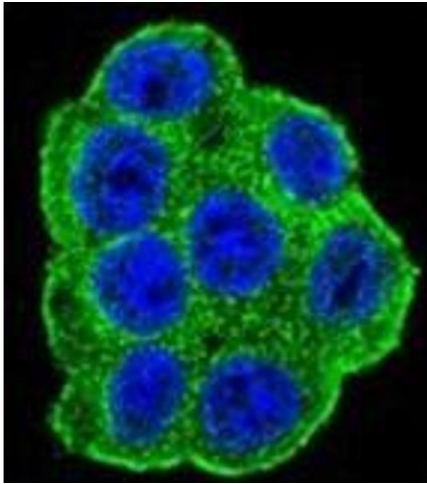
Storage Comment: Store undiluted at 2-8 °C for one month or (in aliquots) at -20 °C for longer.

Images



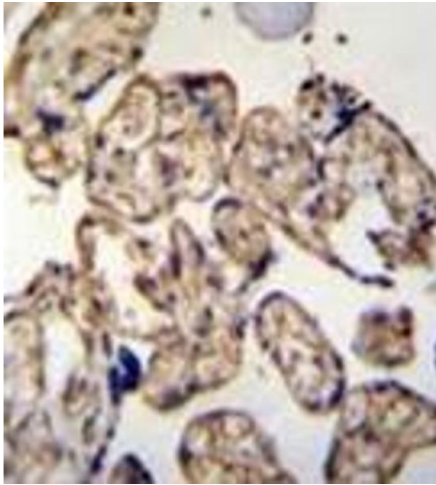
Flow Cytometry

Image 1. Flow cytometric analysis of HeLa cells using LRRC45 Antibody (C-term) Cat.-No AP52538PU-N (right histogram) compared to a negative control cell (left histogram). FITC-conjugated goat-anti-rabbit secondary antibodies were used for the analysis.



Immunofluorescence

Image 2. Confocal immunofluorescent analysis of LRRC45 Antibody (C-term) Cat.-No AP52538PU-N with HeLa cell followed by Alexa Fluor 488-conjugated goat anti-rabbit IgG (green). DAPI was used to stain the cell nuclear (blue).



Immunohistochemistry (Paraffin-embedded Sections)

Image 3. Immunohistochemistry analysis in formalin fixed and paraffin embedded human placenta tissue reacted with LRRC45 Antibody (C-term) followed by peroxidase conjugation of the secondary antibody and DAB staining.

Please check the [product details page](#) for more images. Overall 4 images are available for ABIN953225.