

Datasheet for ABIN953226
anti-LRRC46 antibody (N-Term)[Go to Product page](#)

2 Images

Overview

Quantity:	0.4 mL
Target:	LRRC46
Binding Specificity:	AA 45-75, N-Term
Reactivity:	Human
Host:	Rabbit
Clonality:	Polyclonal
Conjugate:	This LRRC46 antibody is un-conjugated
Application:	Western Blotting (WB), Immunohistochemistry (Paraffin-embedded Sections) (IHC (p)), Enzyme Immunoassay (EIA)

Product Details

Immunogen:	KLH conjugated synthetic peptide between 45-75 amino acids from the N-terminal region of human LRRC46
Isotype:	Ig Fraction
Specificity:	This antibody recognizes Human LRRC46 (N-term).
Purification:	Protein A column, followed by peptide affinity purification

Target Details

Target:	LRRC46
Alternative Name:	LRRC46 (LRRC46 Products)

Target Details

Background:	Synonyms: Leucine-rich repeat-containing protein 46
Molecular Weight:	35340 Da
Gene ID:	90506
NCBI Accession:	NP_219481

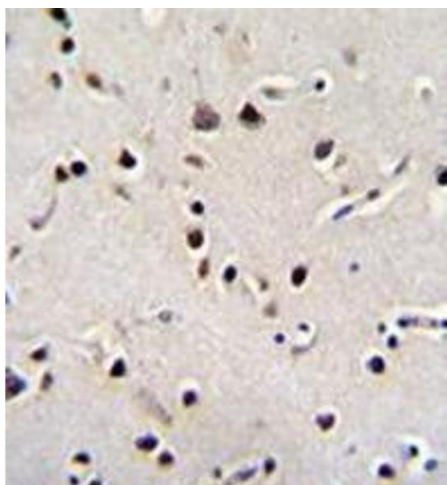
Application Details

Application Notes:	Optimal working dilution should be determined by the investigator.
Restrictions:	For Research Use only

Handling

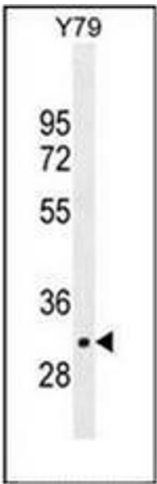
Format:	Liquid
Concentration:	0.25 mg/mL
Buffer:	PBS containing 0.09 % (W/V) Sodium Azide as preservative
Preservative:	Sodium azide
Precaution of Use:	This product contains sodium azide: a POISONOUS AND HAZARDOUS SUBSTANCE which should be handled by trained staff only.
Handling Advice:	Avoid repeated freezing and thawing.
Storage:	4 °C/-20 °C
Storage Comment:	Store undiluted at 2-8 °C for one month or (in aliquots) at -20 °C for longer.

Images



Immunohistochemistry (Paraffin-embedded Sections)

Image 1. Immunohistochemistry analysis in formalin fixed and paraffin embedded human brain tissue reacted with LRRC46 Antibody (N-term) followed by peroxidase conjugation of the secondary antibody and DAB staining.



Western Blotting

Image 2. Western blot analysis of LRRC46 Antibody (N-term) in Y79 cell line lysates (35ug/lane). This demonstrates the LRRC46 antibody detected the LRRC46 protein (arrow).