

Datasheet for ABIN953228  
**anti-LRRC4B antibody (N-Term)**



[Go to Product page](#)

1 Image

## Overview

Quantity:	0.4 mL
Target:	LRRC4B
Binding Specificity:	AA 88-118, N-Term
Reactivity:	Human, Mouse
Host:	Rabbit
Clonality:	Polyclonal
Conjugate:	This LRRC4B antibody is un-conjugated
Application:	Western Blotting (WB), Enzyme Immunoassay (EIA)

## Product Details

Immunogen:	KLH conjugated synthetic peptide between 88-118 amino acids from the N-terminal region of human LRRC4B
Isotype:	Ig Fraction
Specificity:	This antibody recognizes Human and Mouse LRRC4B (N-term).
Purification:	Protein A column, followed by peptide affinity purification

## Target Details

Target:	LRRC4B
Alternative Name:	LRRC4B ( <a href="#">LRRC4B Products</a> )
Background:	Synonyms: LRIG4

## Target Details

Molecular Weight:	76434 Da
Gene ID:	94030
NCBI Accession:	<a href="#">NP_001073926</a>
Pathways:	<a href="#">Synaptic Membrane</a>

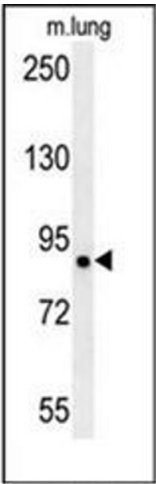
## Application Details

Application Notes:	Optimal working dilution should be determined by the investigator.
Restrictions:	For Research Use only

## Handling

Format:	Liquid
Concentration:	0.25 mg/mL
Buffer:	PBS containing 0.09 % (W/V) Sodium Azide as preservative
Preservative:	Sodium azide
Precaution of Use:	This product contains sodium azide: a POISONOUS AND HAZARDOUS SUBSTANCE which should be handled by trained staff only.
Handling Advice:	Avoid repeated freezing and thawing.
Storage:	4 °C/-20 °C
Storage Comment:	Store undiluted at 2-8 °C for one month or (in aliquots) at -20 °C for longer.

## Images



### Western Blotting

**Image 1.** Western blot analysis of LRRC4B Antibody