

Datasheet for ABIN953229
anti-LRRC57 antibody (C-Term)

3 Images

[Go to Product page](#)

Overview

Quantity:	0.4 mL
Target:	LRRC57
Binding Specificity:	AA 205-235, C-Term
Reactivity:	Human
Host:	Rabbit
Clonality:	Polyclonal
Conjugate:	This LRRC57 antibody is un-conjugated
Application:	Western Blotting (WB), Immunohistochemistry (Paraffin-embedded Sections) (IHC (p)), Enzyme Immunoassay (EIA)

Product Details

Immunogen:	KLH conjugated synthetic peptide between 205-235 amino acids from the C-terminal region of human LRRC57
Isotype:	Ig Fraction
Specificity:	This antibody recognizes Human LRRC57 (C-term).
Purification:	Protein A column, followed by peptide affinity purification

Target Details

Target:	LRRC57
Alternative Name:	LRRC57 (LRRC57 Products)

Target Details

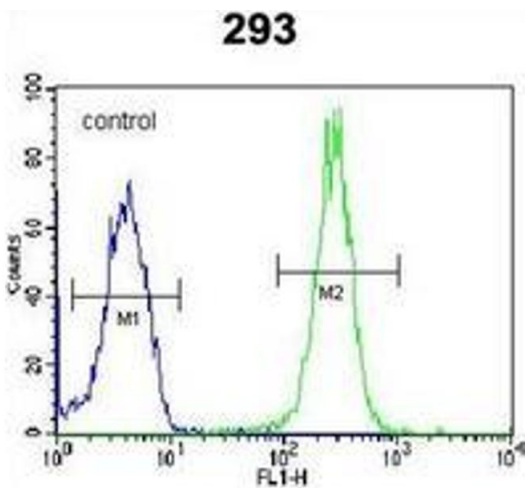
Background:	LRRC57 contains 7 LRR (leucine rich repeats). However, the exact function remains unknown.Synonyms: Leucine-rich repeat-containing protein 57
Molecular Weight:	26754 Da
Gene ID:	255252
NCBI Accession:	NP_694992

Application Details

Application Notes:	Optimal working dilution should be determined by the investigator.
Restrictions:	For Research Use only

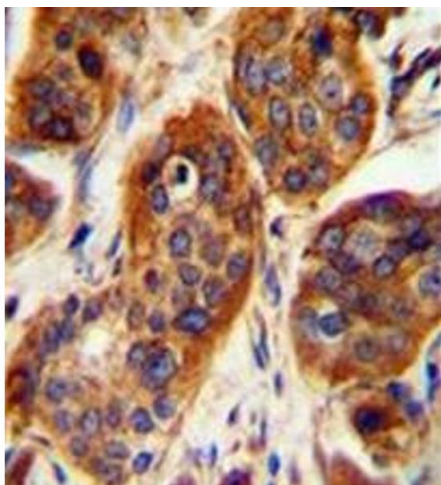
Handling

Format:	Liquid
Concentration:	0.25 mg/mL
Buffer:	PBS containing 0.09 % (W/V) Sodium Azide as preservative
Preservative:	Sodium azide
Precaution of Use:	This product contains sodium azide: a POISONOUS AND HAZARDOUS SUBSTANCE which should be handled by trained staff only.
Handling Advice:	Avoid repeated freezing and thawing.
Storage:	4 °C/-20 °C
Storage Comment:	Store undiluted at 2-8 °C for one month or (in aliquots) at -20 °C for longer.



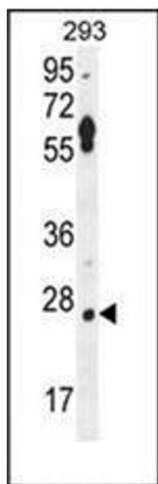
Flow Cytometry

Image 1. Flow cytometric analysis of 293 cells using LRRC57 Antibody (C-term) Cat.-No AP52542PU-N (right histogram) compared to a negative control cell (left histogram). FITC-conjugated goat-anti-rabbit secondary antibodies were used for the analysis.



Immunohistochemistry (Paraffin-embedded Sections)

Image 2. Immunohistochemistry analysis in formalin fixed and paraffin embedded human bladder carcinoma reacted with LRRC57 Antibody (C-term) followed which was peroxidase conjugated to the secondary antibody and followed by DAB staining.



Western Blotting

Image 3. Western blot analysis of LRRC57 Antibody (C-term) in 293 cell line lysates (35ug/lane). This demonstrates the LRRC57 antibody detected the LRRC57 protein (arrow).