

Datasheet for ABIN953231
anti-LRRC63 antibody (C-Term)[Go to Product page](#)

2 Images

Overview

Quantity:	0.4 mL
Target:	LRRC63
Binding Specificity:	AA 491-521, C-Term
Reactivity:	Human
Host:	Rabbit
Clonality:	Polyclonal
Conjugate:	This LRRC63 antibody is un-conjugated
Application:	Western Blotting (WB), Flow Cytometry (FACS), Enzyme Immunoassay (EIA)

Product Details

Immunogen:	KLH conjugated synthetic peptide between 491-521 amino acids from the C-terminal region of Human LRRC63
Isotype:	Ig Fraction
Purification:	Protein A column, followed by peptide affinity purification

Target Details

Target:	LRRC63
Alternative Name:	LRRC63 (LRRC63 Products)
Background:	Synonyms: Leucine-rich repeat-containing protein 63
Molecular Weight:	66309 Da

Target Details

Gene ID: 9606

Application Details

Application Notes: Optimal working dilution should be determined by the investigator.

Restrictions: For Research Use only

Handling

Format: Liquid

Concentration: 0.25 mg/mL

Buffer: PBS containing 0.09 % (W/V) Sodium Azide as preservative

Preservative: Sodium azide

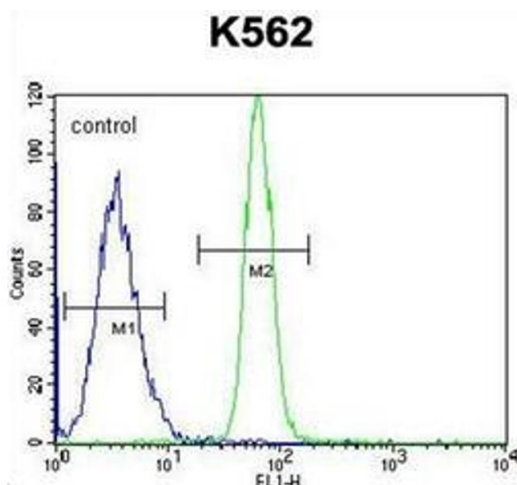
Precaution of Use: This product contains sodium azide: a POISONOUS AND HAZARDOUS SUBSTANCE which should be handled by trained staff only.

Handling Advice: Avoid repeated freezing and thawing.

Storage: 4 °C/-20 °C

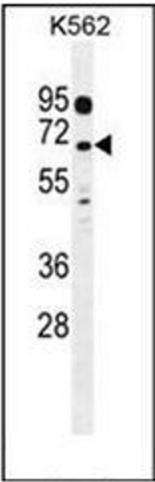
Storage Comment: Store undiluted at 2-8 °C for one month or (in aliquots) at -20 °C for longer.

Images



Flow Cytometry

Image 1. Flow cytometric analysis of K562 cells using LRRC63 Antibody (C-term) Cat.-No AP52544PU-N (right histogram) compared to a negative control cell (left histogram). FITC-conjugated goat-anti-rabbit secondary antibodies were used for the analysis.



Western Blotting

Image 2. Western blot analysis of LRRC63 Antibody (C-term) in K562 cell line lysates (35ug/lane). This demonstrates the LRRC63 antibody detected the LRRC63 protein (arrow).