



[Go to Product page](#)

Datasheet for ABIN953233

## anti-PPP1R37 antibody (N-Term)

### 2 Images

#### Overview

Quantity:	0.4 mL
Target:	PPP1R37
Binding Specificity:	AA 43-71, N-Term
Reactivity:	Mouse, Human
Host:	Rabbit
Clonality:	Polyclonal
Conjugate:	This PPP1R37 antibody is un-conjugated
Application:	Western Blotting (WB), Immunohistochemistry (Paraffin-embedded Sections) (IHC (p)), Enzyme Immunoassay (EIA)

#### Product Details

Immunogen:	KLH conjugated synthetic peptide between 43-71 amino acids from the N-terminal region of human LRRC68
Isotype:	Ig Fraction
Purification:	Protein A column, followed by peptide affinity purification

#### Target Details

Target:	PPP1R37
Alternative Name:	LRRC68 ( <a href="#">PPP1R37 Products</a> )
Background:	Guanine-nucleotide-releasing protein that acts on members of the SCE4/YPT1/RAB subfamily. Stimulates GDP release from both YPT1 and RAB3A, but is less active on these proteins than

## Target Details

---

on the SEC4 protein. Might play a general role in vesicular transport. Provided below are standard protocols that you may find useful for product applications. Synonyms: KIAA1986, Leucine-rich repeat-containing protein 68

---

Molecular Weight: 74783 Da

---

Gene ID: 9606

## Application Details

---

---

Application Notes: Optimal working dilution should be determined by the investigator.

---

Restrictions: For Research Use only

## Handling

---

---

Format: Liquid

---

Concentration: 0.25 mg/mL

---

Buffer: PBS containing 0.09 % (W/V) Sodium Azide as preservative

---

Preservative: Sodium azide

---

Precaution of Use: This product contains sodium azide: a POISONOUS AND HAZARDOUS SUBSTANCE which should be handled by trained staff only.

---

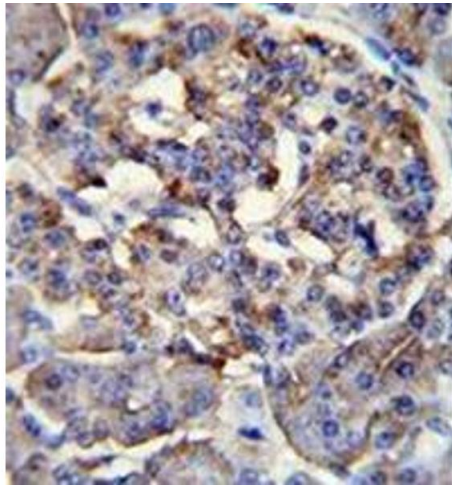
Handling Advice: Avoid repeated freezing and thawing.

---

Storage: 4 °C/-20 °C

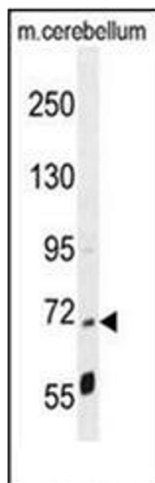
---

Storage Comment: Store undiluted at 2-8 °C for one month or (in aliquots) at -20 °C for longer.



### Immunohistochemistry (Paraffin-embedded Sections)

**Image 1.** Immunohistochemistry analysis in formalin fixed and paraffin embedded human pancreas tissue reacted with LRRC68 Antibody (N-term) followed which was followed peroxidase conjugated to the secondary antibody followed by DAB staining.



### Western Blotting

**Image 2.** Western blot analysis of LRRC68 Antibody (N-term) in mouse cerebellum tissue lysates (35ug/lane). This demonstrates the LRRC68 antibody detected the LRRC68 protein (arrow).