



[Go to Product page](#)

Datasheet for ABIN953237

anti-LRRN4CL antibody (Middle Region)

2 Images

Overview

Quantity:	0.4 mL
Target:	LRRN4CL
Binding Specificity:	AA 124-154, Middle Region
Reactivity:	Human
Host:	Rabbit
Clonality:	Polyclonal
Conjugate:	This LRRN4CL antibody is un-conjugated
Application:	Western Blotting (WB), Immunohistochemistry (Paraffin-embedded Sections) (IHC (p)), Enzyme Immunoassay (EIA)

Product Details

Immunogen:	KLH conjugated synthetic peptide between 124-154 amino acids from the Central region of human LRRN4CL
Isotype:	Ig Fraction
Specificity:	This antibody recognizes Human LRRN4CL (Center).
Purification:	Protein A column, followed by peptide affinity purification

Target Details

Target:	LRRN4CL
Alternative Name:	LRRN4CL (LRRN4CL Products)

Target Details

Background:	LRRN4CL contains one fibronectin type-III domain.Synonyms: LRRN4 C-terminal-like protein
Molecular Weight:	25262 Da
Gene ID:	100510252
NCBI Accession:	NP_981967

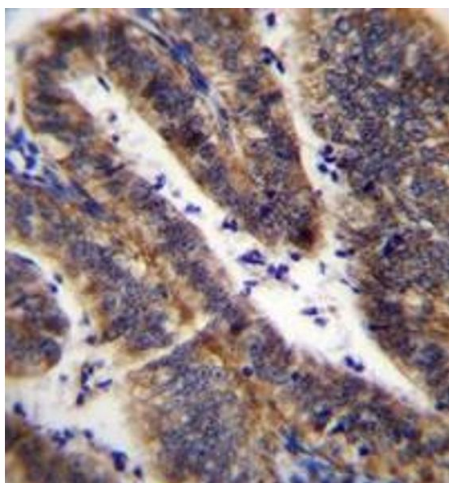
Application Details

Application Notes:	Optimal working dilution should be determined by the investigator.
Restrictions:	For Research Use only

Handling

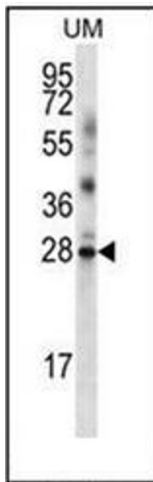
Format:	Liquid
Concentration:	0.25 mg/mL
Buffer:	PBS containing 0.09 % (W/V) Sodium Azide as preservative
Preservative:	Sodium azide
Precaution of Use:	This product contains sodium azide: a POISONOUS AND HAZARDOUS SUBSTANCE which should be handled by trained staff only.
Handling Advice:	Avoid repeated freezing and thawing.
Storage:	4 °C/-20 °C
Storage Comment:	Store undiluted at 2-8 °C for one month or (in aliquots) at -20 °C for longer.

Images



Immunohistochemistry (Paraffin-embedded Sections)

Image 1. Immunohistochemistry analysis in formalin fixed and paraffin embedded human uterus tissue reacted with LRRN4CL Antibody (Center) followed which was peroxidase conjugated to the secondary antibody and followed by DAB staining.



Western Blotting

Image 2. Western blot analysis of LRRN4CL Antibody (Center) in UM cell line lysates (35ug/lane). This demonstrates the LRRN4CL antibody detected the LRRN4CL protein (arrow).