

Datasheet for ABIN953240
anti-LRTM2 antibody (C-Term)

3 Images

[Go to Product page](#)

Overview

Quantity:	0.4 mL
Target:	LRTM2
Binding Specificity:	AA 346-370, C-Term
Reactivity:	Human
Host:	Rabbit
Clonality:	Polyclonal
Conjugate:	This LRTM2 antibody is un-conjugated
Application:	Western Blotting (WB), Immunofluorescence (IF), Immunohistochemistry (Paraffin-embedded Sections) (IHC (p)), Enzyme Immunoassay (EIA)

Product Details

Immunogen:	KLH conjugated synthetic peptide between 346-370 amino acids from the C-terminal region of human LRTM2
Isotype:	Ig Fraction
Specificity:	This antibody recognizes Human LRTM2 (C-term).
Purification:	Protein A column, followed by peptide affinity purification

Target Details

Target:	LRTM2
Alternative Name:	LRTM2 (LRTM2 Products)

Target Details

Background:	Synonyms: Leucine-rich repeat and transmembrane domain-containing protein 2
Molecular Weight:	41158 Da
Gene ID:	654429
NCBI Accession:	NP_001034118

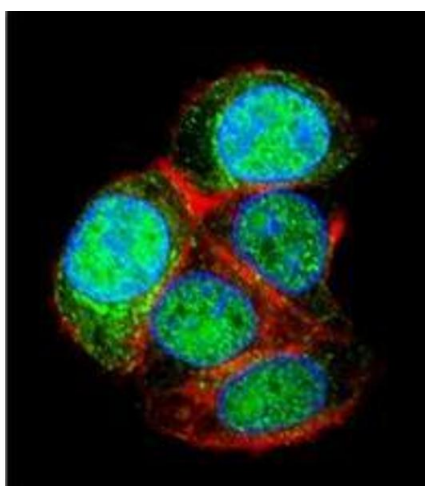
Application Details

Application Notes:	Optimal working dilution should be determined by the investigator.
Restrictions:	For Research Use only

Handling

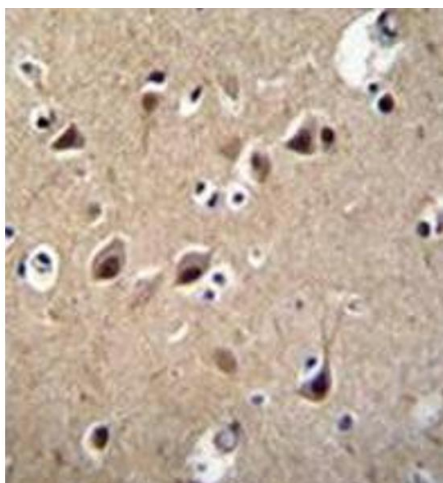
Format:	Liquid
Concentration:	0.25 mg/mL
Buffer:	PBS containing 0.09 % (W/V) Sodium Azide as preservative
Preservative:	Sodium azide
Precaution of Use:	This product contains sodium azide: a POISONOUS AND HAZARDOUS SUBSTANCE which should be handled by trained staff only.
Handling Advice:	Avoid repeated freezing and thawing.
Storage:	4 °C/-20 °C
Storage Comment:	Store undiluted at 2-8 °C for one month or (in aliquots) at -20 °C for longer.

Images



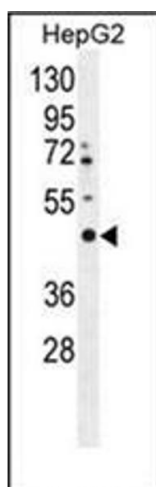
Immunofluorescence

Image 1. Confocal immunofluorescent analysis of LRTM2 Antibody (C-term) Cat.-No AP52551PU-N with HepG2 cell followed by Alexa Fluor 488-conjugated goat anti-rabbit IgG (green). Actin filaments have been labeled with Alexa Fluor 555 phalloidin (red). DAPI was used to stain the cell nuclear (blue).



Immunohistochemistry (Paraffin-embedded Sections)

Image 2. Immunohistochemistry analysis in formalin fixed and paraffin embedded human brain tissue reacted with LRTM2 Antibody (C-term) followed which was peroxidase conjugated to the secondary antibody followed by DAB staining.



Western Blotting

Image 3. Western blot analysis of LRTM2 Antibody (C-term) in HepG2 cell line lysates (35ug/lane). This demonstrates the LRTM2 antibody detected the LRTM2 protein (arrow).