

Datasheet for ABIN953241  
**anti-LRWD1 antibody (N-Term)**[Go to Product page](#)

## 2 Images

## Overview

Quantity:	0.4 mL
Target:	LRWD1
Binding Specificity:	AA 4-33, N-Term
Reactivity:	Mouse, Human
Host:	Rabbit
Clonality:	Polyclonal
Conjugate:	This LRWD1 antibody is un-conjugated
Application:	Western Blotting (WB), Immunohistochemistry (Paraffin-embedded Sections) (IHC (p)), Enzyme Immunoassay (EIA)

## Product Details

Immunogen:	KLH conjugated synthetic peptide between 4-33 amino acids from the N-terminal region of human LRWD1
Isotype:	Ig Fraction
Specificity:	This antibody recognizes Human and Mouse LRWD1 (N-term).
Purification:	Protein A column, followed by peptide affinity purification

## Target Details

Target:	LRWD1
Alternative Name:	LRWD1 ( <a href="#">LRWD1 Products</a> )

## Target Details

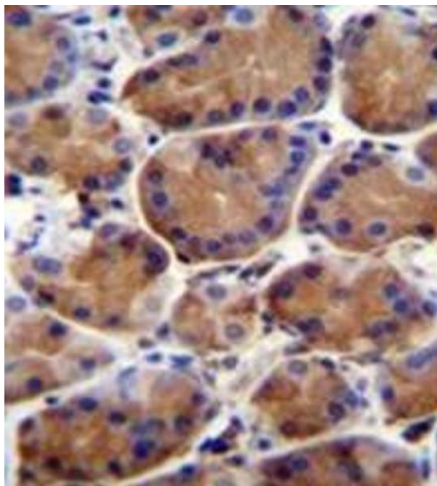
Background:	LRWD1, Leucine rich repeats and WD repeat domain containing 1, contains 3 LRR (leucine-rich) repeats and 5 WD repeats.Synonyms: Leucine-rich repeat and WD repeat-containing protein 1, ORC-associated protein, ORCA, Origin recognition complex-associated protein
Molecular Weight:	70861 Da
Gene ID:	222229
NCBI Accession:	<a href="#">NP_690852</a>
Pathways:	<a href="#">Chromatin Binding</a>

## Application Details

Application Notes:	Optimal working dilution should be determined by the investigator.
Restrictions:	For Research Use only

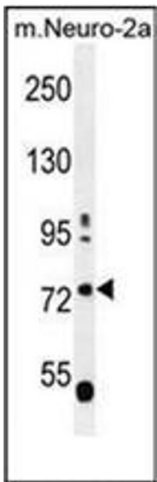
## Handling

Format:	Liquid
Concentration:	0.25 mg/mL
Buffer:	PBS containing 0.09 % (W/V) Sodium Azide as preservative
Preservative:	Sodium azide
Precaution of Use:	This product contains sodium azide: a POISONOUS AND HAZARDOUS SUBSTANCE which should be handled by trained staff only.
Handling Advice:	Avoid repeated freezing and thawing.
Storage:	4 °C/-20 °C
Storage Comment:	Store undiluted at 2-8 °C for one month or (in aliquots) at -20 °C for longer.



**Immunohistochemistry (Paraffin-embedded Sections)**

**Image 1.** Immunohistochemistry analysis in formalin fixed and paraffin embedded human stomach tissue reacted with LRWD1 Antibody (N-term) followed which was peroxidase conjugated to the secondary antibody and followed by DAB staining.



**Western Blotting**

**Image 2.** Western blot analysis of LRWD1 Antibody (N-term) in mouse Neuro-2a cell line lysates (35ug/lane). This demonstrates the LRWD1 antibody detected the LRWD1 protein (arrow).