

Datasheet for ABIN953244  
**anti-LSM7 antibody (C-Term)**



[Go to Product page](#)

1 Image

## Overview

Quantity:	0.4 mL
Target:	LSM7
Binding Specificity:	AA 52-80, C-Term
Reactivity:	Human, Mouse
Host:	Rabbit
Clonality:	Polyclonal
Conjugate:	This LSM7 antibody is un-conjugated
Application:	Western Blotting (WB), Enzyme Immunoassay (EIA)

## Product Details

Immunogen:	KLH conjugated synthetic peptide between 52-80 amino acids from the C-terminal region of human LSM7
Isotype:	Ig Fraction
Specificity:	This antibody recognizes Human and Mouse LSM7 (C-term).
Purification:	Protein A column, followed by peptide affinity purification

## Target Details

Target:	LSM7
Alternative Name:	LSM7 ( <a href="#">LSM7 Products</a> )
Background:	Sm-like proteins were identified in a variety of organisms based on sequence homology with

## Target Details

the Sm protein family (see SNRPD2, MIM 601061). Sm-like proteins contain the Sm sequence motif, which consists of 2 regions separated by a linker of variable length that folds as a loop. The Sm-like proteins are thought to form a stable heteromer present in tri-snRNP particles, which are important for pre-mRNA splicing. Synonyms: U6 snRNA-associated Sm-like protein LSm7

Molecular Weight: 11602 Da

Gene ID: 51690

NCBI Accession: [NP\\_057283](#)

## Application Details

Application Notes: Optimal working dilution should be determined by the investigator.

Restrictions: For Research Use only

## Handling

Format: Liquid

Concentration: 0.25 mg/mL

Buffer: PBS containing 0.09 % (W/V) Sodium Azide as preservative

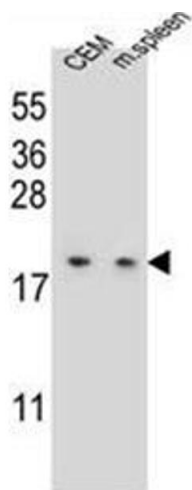
Preservative: Sodium azide

Precaution of Use: This product contains sodium azide: a POISONOUS AND HAZARDOUS SUBSTANCE which should be handled by trained staff only.

Handling Advice: Avoid repeated freezing and thawing.

Storage: 4 °C/-20 °C

Storage Comment: Store undiluted at 2-8 °C for one month or (in aliquots) at -20 °C for longer.



Western Blotting

**Image 1.** Western blot analysis of LSM7 Antibody (C-term) in CEM cell line and mouse spleen tissue lysates (35ug/lane). This demonstrates the LSM7 antibody detected the LSM7 protein (arrow).