

Datasheet for ABIN953247
anti-LUC7L antibody (Middle Region)[Go to Product page](#)

2 Images

Overview

Quantity:	0.4 mL
Target:	LUC7L
Binding Specificity:	AA 218-246, Middle Region
Reactivity:	Human
Host:	Rabbit
Clonality:	Polyclonal
Conjugate:	This LUC7L antibody is un-conjugated
Application:	Western Blotting (WB), Immunohistochemistry (Paraffin-embedded Sections) (IHC (p)), Enzyme Immunoassay (EIA)

Product Details

Immunogen:	KLH conjugated synthetic peptide between 218-246 amino acids from the Central region of human LUC7L
Isotype:	Ig Fraction
Specificity:	This antibody recognizes Human LUC7L (Center).
Purification:	Protein A column, followed by peptide affinity purification

Target Details

Target:	LUC7L
Alternative Name:	LUC7L (LUC7L Products)

Target Details

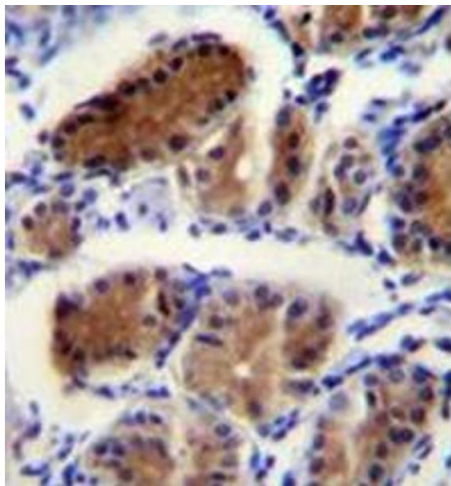
Background:	The LUC7L gene may represent a mammalian heterochromatic gene, encoding a putative RNA-binding protein similar to the yeast Luc7p subunit of the U1 snRNP splicing complex that is normally required for 5-prime splice site selection (Tufarelli et al., 2001 [PubMed 11170747]).Synonyms: LUC7B1, LUC7L1, Luc7-like 1, Putative RNA-binding protein Luc7-like 1, Putative SR protein LUC7B1, SR+89
Molecular Weight:	43728 Da
Gene ID:	55692
NCBI Accession:	NP_060502
Pathways:	Ribonucleoprotein Complex Subunit Organization

Application Details

Application Notes:	Optimal working dilution should be determined by the investigator.
Restrictions:	For Research Use only

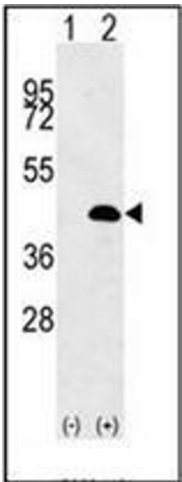
Handling

Format:	Liquid
Concentration:	0.25 mg/mL
Buffer:	PBS containing 0.09 % (W/V) Sodium Azide as preservative
Preservative:	Sodium azide
Precaution of Use:	This product contains sodium azide: a POISONOUS AND HAZARDOUS SUBSTANCE which should be handled by trained staff only.
Handling Advice:	Avoid repeated freezing and thawing.
Storage:	4 °C/-20 °C
Storage Comment:	Store undiluted at 2-8 °C for one month or (in aliquots) at -20 °C for longer.



Immunohistochemistry (Paraffin-embedded Sections)

Image 1. Immunohistochemistry analysis in formalin fixed and paraffin embedded human stomach tissue reacted with LUC7L Antibody (Center) followed by peroxidase conjugation of the secondary antibody and DAB staining.



Western Blotting

Image 2. Western blot analysis of LUC7L (arrow) using LUC7L Antibody (Center) Cat.-No AP52560PU-N. 293 cell lysates (2 ug/lane) either nontransfected (Lane 1) or transiently transfected (Lane 2) with the LUC7L gene.