

Datasheet for ABIN953253
anti-LY6G6C antibody (C-Term)[Go to Product page](#)

2 Images

Overview

Quantity:	0.4 mL
Target:	LY6G6C
Binding Specificity:	AA 69-99, C-Term
Reactivity:	Human
Host:	Rabbit
Clonality:	Polyclonal
Conjugate:	This LY6G6C antibody is un-conjugated
Application:	Western Blotting (WB), Immunohistochemistry (Paraffin-embedded Sections) (IHC (p)), Enzyme Immunoassay (EIA)

Product Details

Immunogen:	conjugated synthetic peptide between 69-99 amino acids from the C-terminal region of human LY6G6C
Isotype:	Ig Fraction
Specificity:	This antibody recognizes Human LY6G6C (C-term).
Purification:	Protein A column, followed by peptide affinity purification

Target Details

Target:	LY6G6C
Alternative Name:	LY6G6C (LY6G6C Products)

Target Details

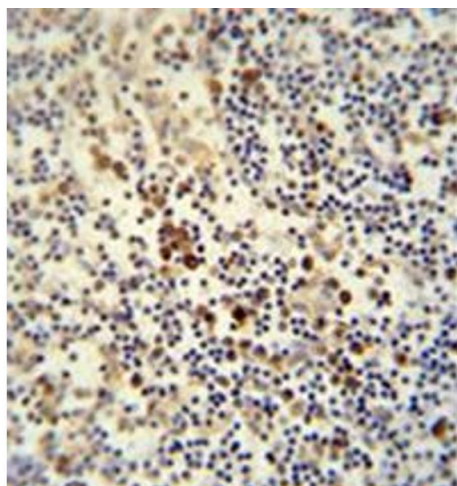
Background:	LY6G6C belongs to a cluster of leukocyte antigen-6 (LY6) genes located in the major histocompatibility complex (MHC) class III region on chromosome 6. Members of the LY6 superfamily typically contain 70 to 80 amino acids, including 8 to 10 cysteines. Most LY6 proteins are attached to the cell surface by a glycosylphosphatidylinositol (GPI) anchor that is directly involved in signal transduction (Mallya et al., 2002 [PubMed 12079290]).Synonyms: C6orf24, G6C, Lymphocyte antigen 6 complex locus protein G6c, NG24
Molecular Weight:	13821 Da
Gene ID:	80740
NCBI Accession:	NP_079537

Application Details

Application Notes:	Optimal working dilution should be determined by the investigator.
Restrictions:	For Research Use only

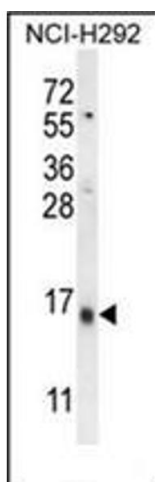
Handling

Format:	Liquid
Concentration:	0.25 mg/mL
Buffer:	PBS containing 0.09 % (W/V) Sodium Azide as preservative
Preservative:	Sodium azide
Precaution of Use:	This product contains sodium azide: a POISONOUS AND HAZARDOUS SUBSTANCE which should be handled by trained staff only.
Handling Advice:	Avoid repeated freezing and thawing.
Storage:	4 °C/-20 °C
Storage Comment:	Store undiluted at 2-8 °C for one month or (in aliquots) at -20 °C for longer.



Immunohistochemistry (Paraffin-embedded Sections)

Image 1. Immunohistochemistry analysis in formalin fixed and paraffin embedded human lymph node reacted with LY6G6C Antibody (C-term) followed which was peroxidase conjugated to the secondary antibody and followed by DAB staining.



Western Blotting

Image 2. Western blot analysis of LY6G6C Antibody (C-term) in NCI-H292 cell line lysates (35ug/lane). This demonstrates the LY6G6C antibody detected the LY6G6C protein (arrow).