

Datasheet for ABIN953259  
**anti-LYPD4 antibody (Middle Region)**

## 2 Images

[Go to Product page](#)

## Overview

Quantity:	0.4 mL
Target:	LYPD4
Binding Specificity:	AA 111-141, Middle Region
Reactivity:	Human, Mouse
Host:	Rabbit
Clonality:	Polyclonal
Conjugate:	This LYPD4 antibody is un-conjugated
Application:	Western Blotting (WB), Immunohistochemistry (Paraffin-embedded Sections) (IHC (p)), Enzyme Immunoassay (EIA)

## Product Details

Immunogen:	KLH conjugated synthetic peptide between 111-141 amino acids from the Central region of human LYPD4
Isotype:	Ig Fraction
Specificity:	This antibody recognizes Human and Mouse LYPD4 (Center).
Purification:	Protein A column, followed by peptide affinity purification

## Target Details

Target:	LYPD4
Alternative Name:	LYPD4 ( <a href="#">LYPD4 Products</a> )

## Target Details

Background:	Synonyms: Ly6/PLAUR domain-containing protein 4
Molecular Weight:	26763 Da
Gene ID:	147719
NCBI Accession:	<a href="#">NP_775777</a>

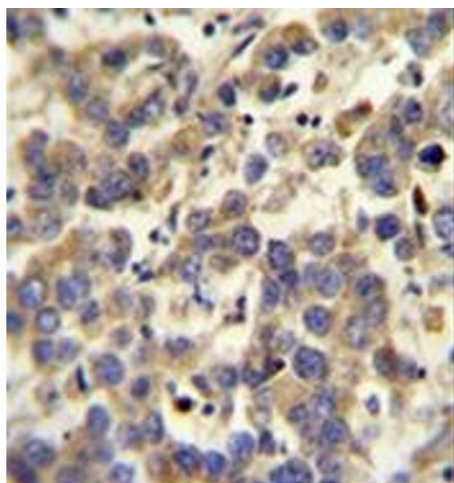
## Application Details

Application Notes:	Optimal working dilution should be determined by the investigator.
Restrictions:	For Research Use only

## Handling

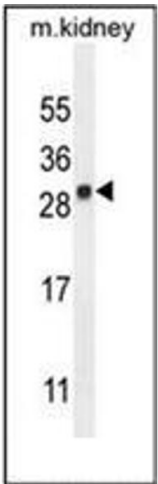
Format:	Liquid
Concentration:	0.25 mg/mL
Buffer:	PBS containing 0.09 % (W/V) Sodium Azide as preservative
Preservative:	Sodium azide
Precaution of Use:	This product contains sodium azide: a POISONOUS AND HAZARDOUS SUBSTANCE which should be handled by trained staff only.
Handling Advice:	Avoid repeated freezing and thawing.
Storage:	4 °C/-20 °C
Storage Comment:	Store undiluted at 2-8 °C for one month or (in aliquots) at -20 °C for longer.

## Images



### Immunohistochemistry (Paraffin-embedded Sections)

**Image 1.** Immunohistochemistry analysis in formalin fixed and paraffin embedded human testis carcinoma reacted with LYPD4 Antibody (Center) followed which was peroxidase conjugated to the secondary antibody and followed by DAB staining.



Western Blotting

**Image 2.** Western blot analysis of LYPD4 Antibody (Center) in mouse kidney tissue lysates (35ug/lane). This demonstrates the LYPD4 antibody detected the LYPD4 protein (arrow).