

Datasheet for ABIN953279  
**anti-MAF1 antibody (Middle Region)**

## 3 Images

[Go to Product page](#)

## Overview

Quantity:	0.4 mL
Target:	MAF1
Binding Specificity:	AA 97-125, Middle Region
Reactivity:	Human, Mouse
Host:	Rabbit
Clonality:	Polyclonal
Conjugate:	This MAF1 antibody is un-conjugated
Application:	Western Blotting (WB), Flow Cytometry (FACS), Immunohistochemistry (Paraffin-embedded Sections) (IHC (p)), Enzyme Immunoassay (EIA)

## Product Details

Immunogen:	KLH conjugated synthetic peptide between 97-125 amino acids from the Central region of human MAF1
Isotype:	Ig Fraction
Specificity:	This antibody recognizes Human and Mouse MAF1 (Center).
Purification:	Protein A column, followed by peptide affinity purification

## Target Details

Target:	MAF1
Alternative Name:	MAF1 ( <a href="#">MAF1 Products</a> )

## Target Details

**Background:** This gene encodes a protein that is similar to Maf1, a *Saccharomyces cerevisiae* protein highly conserved in eukaryotic cells. Yeast Maf1 is a negative effector of RNA polymerase III (Pol III). It responds to changes in the cellular environment and represses pol III transcription. Biochemical studies identified the initiation factor TFIIIB as a target for Maf1-dependent repression. Synonyms: Repressor of RNA polymerase III transcription MAF1 homolog

**Molecular Weight:** 28771 Da

**Gene ID:** 84232

**NCBI Accession:** [NP\\_115648](#)

## Application Details

**Application Notes:** Optimal working dilution should be determined by the investigator.

**Restrictions:** For Research Use only

## Handling

**Format:** Liquid

**Concentration:** 0.25 mg/mL

**Buffer:** PBS containing 0.09 % (W/V) Sodium Azide as preservative

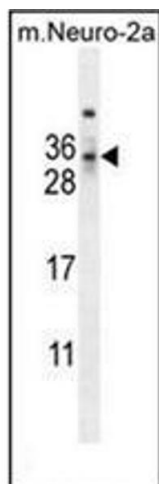
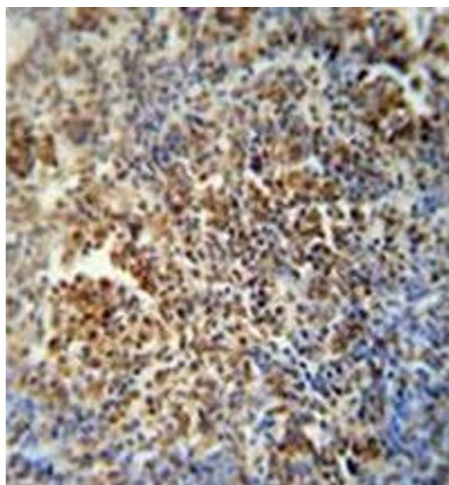
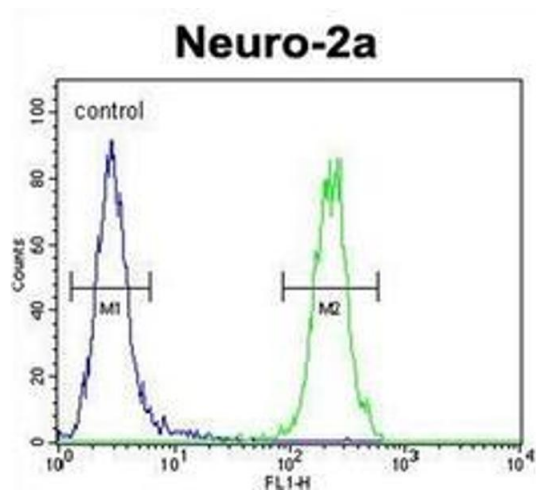
**Preservative:** Sodium azide

**Precaution of Use:** This product contains sodium azide: a POISONOUS AND HAZARDOUS SUBSTANCE which should be handled by trained staff only.

**Handling Advice:** Avoid repeated freezing and thawing.

**Storage:** 4 °C/-20 °C

**Storage Comment:** Store undiluted at 2-8 °C for one month or (in aliquots) at -20 °C for longer.



### Flow Cytometry

**Image 1.** Flow cytometric analysis of Neuro-2a cells using MAF1 Antibody (Center) Cat.-No AP52581PU-N (right histogram) compared to a negative control cell (left histogram). FITC-conjugated goat-anti-rabbit secondary antibodies were used for the analysis

### Immunohistochemistry (Paraffin-embedded Sections)

**Image 2.** Immunohistochemistry analysis in formalin fixed and paraffin embedded human lung carcinoma reacted with MAF1 Antibody (Center) followed which was peroxidase conjugated to the secondary antibody and followed by DAB staining.

### Western Blotting

**Image 3.** Western blot analysis of MAF1 Antibody (Center) in mouse Neuro-2a cell line lysates (35ug/lane). This demonstrates the MAF1 antibody detected the MAF1 protein (arrow).