



Datasheet for ABIN953300  
**anti-MAP4K2 antibody (Middle Region)**



[Go to Product page](#)

2 Images

Overview

Quantity:	0.4 mL
Target:	MAP4K2
Binding Specificity:	AA 320-349, Middle Region
Reactivity:	Human
Host:	Rabbit
Clonality:	Polyclonal
Conjugate:	This MAP4K2 antibody is un-conjugated
Application:	Western Blotting (WB), Flow Cytometry (FACS), Enzyme Immunoassay (EIA)

Product Details

Immunogen:	KLH conjugated synthetic peptide between 320-349 amino acids from the Central region of human MAP4K2
Isotype:	Ig Fraction
Specificity:	This antibody recognizes Human MAP4K2 (Center).
Purification:	Protein A column, followed by peptide affinity purification

Target Details

Target:	MAP4K2
Alternative Name:	MAP4K2 ( <a href="#">MAP4K2 Products</a> )
Background:	The protein encoded by this gene is a member of the serine/threonine protein kinase family.

## Target Details

---

Although this kinase is found in many tissues, its expression in lymphoid follicles is restricted to the cells of germinal centre, where it may participate in B-cell differentiation. This kinase can be activated by TNF-alpha, and has been shown to specifically activate MAP kinases. This kinase is also found to interact with TNF receptor-associated factor 2 (TRAF2), which is involved in the activation of MAP3K1/MEKK1. Synonyms: B lymphocyte serine/threonine-protein kinase, Germinal center kinase, MAPK, MEK kinase kinase 2, MEKKK 2, Mitogen-activated protein kinase kinase kinase kinase 2, RAB8IP, Rab8-interacting protein

---

Molecular Weight: 91556 Da

---

Gene ID: 5871

---

NCBI Accession: [NP\\_004570](#)

## Application Details

---

---

Application Notes: Optimal working dilution should be determined by the investigator.

---

Restrictions: For Research Use only

## Handling

---

---

Format: Liquid

---

Concentration: 0.25 mg/mL

---

Buffer: PBS containing 0.09 % (W/V) Sodium Azide as preservative

---

Preservative: Sodium azide

---

Precaution of Use: This product contains sodium azide: a POISONOUS AND HAZARDOUS SUBSTANCE which should be handled by trained staff only.

---

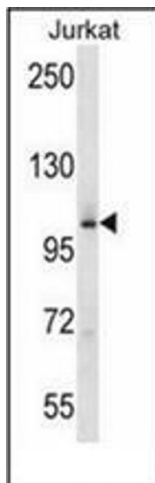
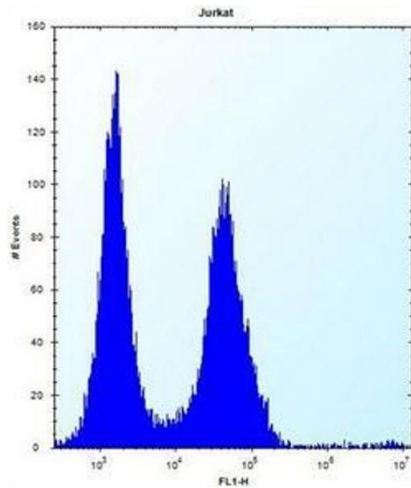
Handling Advice: Avoid repeated freezing and thawing.

---

Storage: 4 °C/-20 °C

---

Storage Comment: Store undiluted at 2-8 °C for one month or (in aliquots) at -20 °C for longer.



### Flow Cytometry

**Image 1.** Flow cytometric analysis of Jurkat cells using MAP4K2 Antibody (Center) Cat.-No AP52600PU-N (right histogram) compared to a negative control cell (left histogram). FITC-conjugated donkey-anti-rabbit secondary antibodies were used for the analysis.

### Western Blotting

**Image 2.** Western blot analysis of MAP4K2 Antibody (Center) in Jurkat cell line lysates (35ug/lane). This demonstrates the MAP4K2 antibody detected the MAP4K2 protein (arrow).