

Datasheet for ABIN953305  
**anti-MAPK1IP1L antibody (C-Term, Middle Region)**



[Go to Product page](#)

2 Images

## Overview

Quantity:	0.4 mL
Target:	MAPK1IP1L
Binding Specificity:	AA 115-145, C-Term, Middle Region
Reactivity:	Human
Host:	Rabbit
Clonality:	Polyclonal
Conjugate:	This MAPK1IP1L antibody is un-conjugated
Application:	Western Blotting (WB), Immunohistochemistry (Paraffin-embedded Sections) (IHC (p))

## Product Details

Immunogen:	KLH conjugated synthetic peptide between 115~145 amino acids from the C-terminal region of human MAPK1IP1L
Isotype:	Ig Fraction
Specificity:	This antibody recognizes Human MAPK1IP1L (Center).
Purification:	Protein A column, followed by peptide affinity purification

## Target Details

Target:	MAPK1IP1L
Alternative Name:	MAPK1IP1L ( <a href="#">MAPK1IP1L Products</a> )
Background:	Synonyms: C14orf32, MAPK-interacting and spindle-stabilizing protein-like, Mitogen-activated

## Target Details

protein kinase 1-interacting protein 1-like

Molecular Weight: 24269 Da

Gene ID: 93487

NCBI Accession: [NP\\_653179](#)

## Application Details

Application Notes: Optimal working dilution should be determined by the investigator.

Restrictions: For Research Use only

## Handling

Format: Liquid

Concentration: 0.25 mg/mL

Buffer: PBS containing 0.09 % (W/V) Sodium Azide as preservative

Preservative: Sodium azide

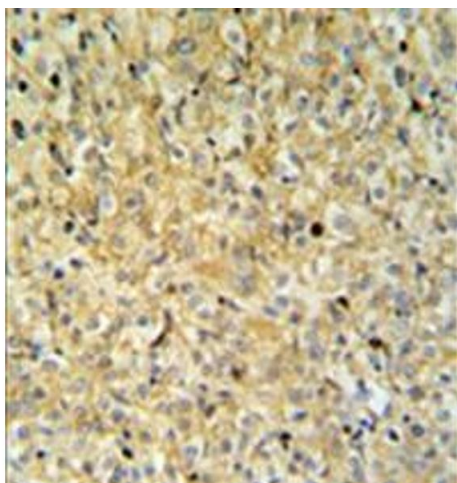
Precaution of Use: This product contains sodium azide: a POISONOUS AND HAZARDOUS SUBSTANCE which should be handled by trained staff only.

Handling Advice: Avoid repeated freezing and thawing.

Storage: 4 °C/-20 °C

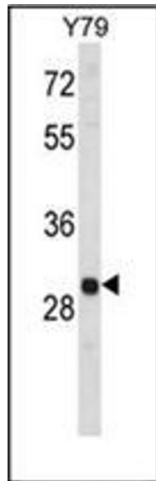
Storage Comment: Store undiluted at 2-8 °C for one month or (in aliquots) at -20 °C for longer.

## Images



### Immunohistochemistry (Paraffin-embedded Sections)

**Image 1.** Immunohistochemistry analysis in formalin fixed and paraffin embedded kidney carcinoma reacted with MAPK1IP1L Antibody (Center) followed which was peroxidase conjugated to the secondary antibody and followed by DAB staining. This data demonstrates the use of the MAPK1IP1L Antibody (Center) for . Clinical relevance has not been evaluated.



### Western Blotting

**Image 2.** Western blot analysis of MAPK1IP1L Antibody (Center) in Y79 cell line lysates (35ug/lane). MAPK1IP1L (arrow) was detected using the purified Pab.