

Datasheet for ABIN953319

anti-MARCKSL1 antibody (C-Term)[Go to Product page](#)**1** Image

Overview

Quantity:	0.4 mL
Target:	MARCKSL1
Binding Specificity:	AA 131-160, C-Term
Reactivity:	Human
Host:	Rabbit
Clonality:	Polyclonal
Conjugate:	This MARCKSL1 antibody is un-conjugated
Application:	Western Blotting (WB), Enzyme Immunoassay (EIA)

Product Details

Immunogen:	KLH conjugated synthetic peptide between 131-160 amino acids from the C-terminal region of human MARCKSL
Isotype:	Ig Fraction
Specificity:	This antibody recognizes Human MARCKSL1 (C-term).
Purification:	Protein A column, followed by peptide affinity purification

Target Details

Target:	MARCKSL1
Alternative Name:	MARCKS-Like 1 (MARCKSL1 Products)
Background:	MARCKSL1 may be involved in coupling the protein kinase C and calmodulin signal

Target Details

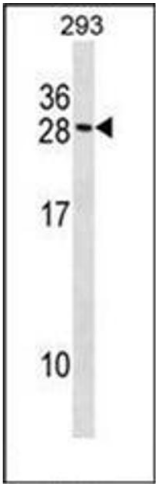
	transduction systems.Synonyms: MARCKS-related protein, MARCKSL1, MLP, MRP, Macrophage myristoylated alanine-rich C kinase substrate
Molecular Weight:	19529 Da
Gene ID:	65108
NCBI Accession:	NP_075385

Application Details

Application Notes:	Optimal working dilution should be determined by the investigator.
Restrictions:	For Research Use only

Handling

Format:	Liquid
Concentration:	0.25 mg/mL
Buffer:	PBS containing 0.09 % (W/V) Sodium Azide as preservative
Preservative:	Sodium azide
Precaution of Use:	This product contains sodium azide: a POISONOUS AND HAZARDOUS SUBSTANCE which should be handled by trained staff only.
Handling Advice:	Avoid repeated freezing and thawing.
Storage:	4 °C/-20 °C
Storage Comment:	Store undiluted at 2-8 °C for one month or (in aliquots) at -20 °C for longer.



Western Blotting

Image 1. Western blot analysis of MARCKSL1 Antibody