

Datasheet for ABIN953326

**anti-MAML1 antibody (Middle Region)****2** Images[Go to Product page](#)

## Overview

Quantity:	0.4 mL
Target:	MAML1
Binding Specificity:	AA 205-234, Middle Region
Reactivity:	Human
Host:	Rabbit
Clonality:	Polyclonal
Conjugate:	This MAML1 antibody is un-conjugated
Application:	Western Blotting (WB), Flow Cytometry (FACS), Enzyme Immunoassay (EIA)

## Product Details

Immunogen:	KLH conjugated synthetic peptide between 205-234 amino acids from the Central region of human Mastermind-Like Protein 1 Genename: MAML1
Isotype:	Ig Fraction
Specificity:	This antibody recognizes Human Mastermind-Like Protein 1 (Center).
Purification:	Protein A column, followed by peptide affinity purification

## Target Details

Target:	MAML1
Alternative Name:	Mastermind-Like Protein 1 ( <a href="#">MAML1 Products</a> )
Background:	This protein is the human homolog of mastermind, a Drosophila protein that plays a role in the

## Target Details

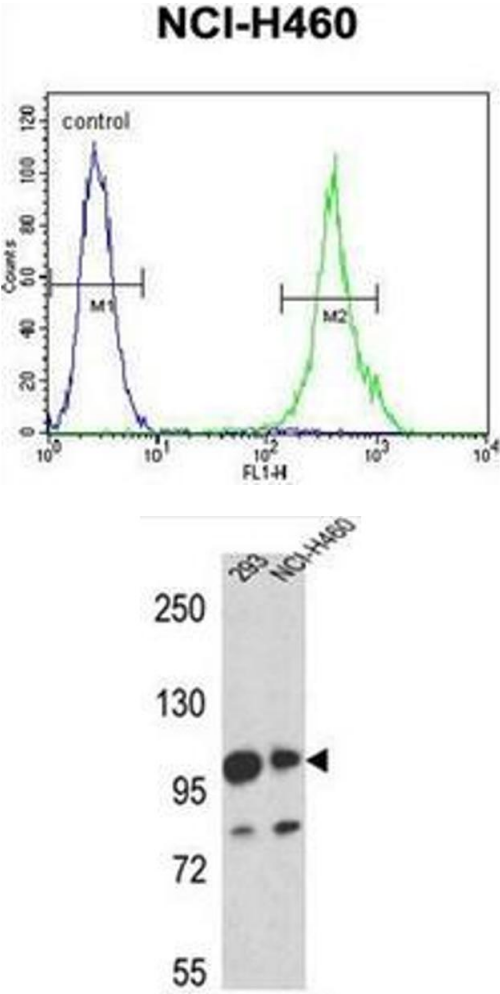
	Notch signaling pathway involved in cell-fate determination. There is in vitro evidence that the human homolog forms a complex with the intracellular portion of human Notch receptors and can increase expression of a Notch-induced gene. This evidence supports its proposed function as a transcriptional co-activator in the Notch signaling pathway.Synonyms: MAML1, Mam-1
Molecular Weight:	108054 Da
Gene ID:	9794
NCBI Accession:	<a href="#">NP_055572</a>
Pathways:	<a href="#">Notch Signaling</a> , <a href="#">Regulation of Muscle Cell Differentiation</a> , <a href="#">Skeletal Muscle Fiber Development</a>

## Application Details

Application Notes:	Optimal working dilution should be determined by the investigator.
Restrictions:	For Research Use only

## Handling

Format:	Liquid
Concentration:	0.25 mg/mL
Buffer:	PBS containing 0.09 % (W/V) Sodium Azide as preservative
Preservative:	Sodium azide
Precaution of Use:	This product contains sodium azide: a POISONOUS AND HAZARDOUS SUBSTANCE which should be handled by trained staff only.
Handling Advice:	Avoid repeated freezing and thawing.
Storage:	4 °C/-20 °C
Storage Comment:	Store undiluted at 2-8 °C for one month or (in aliquots) at -20 °C for longer.



Flow Cytometry

**Image 1.** Flow cytometric analysis of NCI-H460 cells using Mastermind-Like Protein 1 Antibody (Center) Cat.-No AP52591PU-N(right histogram) compared to a negative control cell (left histogram). FITC-conjugated goat-anti-rabbit secondary antibodies were used for the analysis.

Western Blotting

**Image 2.** Western blot analysis of Mastermind-Like Protein 1 Antibody (Center) in 293,NCI-H460 cell line lysates (35ug/lane).