



[Go to Product page](#)

Datasheet for ABIN953327

anti-MAT1A antibody (N-Term)

2 Images

Overview

Quantity:	0.4 mL
Target:	MAT1A
Binding Specificity:	AA 114-144, N-Term
Reactivity:	Human
Host:	Rabbit
Clonality:	Polyclonal
Conjugate:	This MAT1A antibody is un-conjugated
Application:	Western Blotting (WB), Immunohistochemistry (Paraffin-embedded Sections) (IHC (p)), Enzyme Immunoassay (EIA)

Product Details

Immunogen:	KLH conjugated synthetic peptide between 114-144 amino acids from the N-terminal region of human MAT1A
Isotype:	Ig Fraction
Specificity:	This antibody recognizes Human MAT1A (N-term).
Purification:	Protein A column, followed by peptide affinity purification

Target Details

Target:	MAT1A
Alternative Name:	MAT1A (MAT1A Products)

Target Details

Background: This gene catalyzes a two-step reaction that involves the transfer of the adenosyl moiety of ATP to methionine to form S-adenosylmethionine and triphosphosphate, which is subsequently cleaved to PPI and Pi. S-adenosylmethionine is the source of methyl groups for most biological methylations. The encoded protein is found as a homotetramer (MAT I) or a homodimer (MAT III) whereas a third form, MAT II (gamma), is encoded by the MAT2A gene. Mutations in this gene are associated with methionine adenosyltransferase deficiency. Synonyms: AMS1, AdoMet synthetase 1, MAT 1, MAT-I/III, MATA1, Methionine adenosyltransferase 1, Methionine adenosyltransferase I/III, S-adenosylmethionine synthetase isoform type-1

Molecular Weight: 43648 Da

Gene ID: 4143

NCBI Accession: [NP_000420](#)

Pathways: [Mitotic G1-G1/S Phases](#), [M Phase](#), [Ribonucleoside Biosynthetic Process](#), [Methionine Biosynthetic Process](#)

Application Details

Application Notes: Optimal working dilution should be determined by the investigator.

Restrictions: For Research Use only

Handling

Format: Liquid

Concentration: 0.25 mg/mL

Buffer: PBS containing 0.09 % (W/V) Sodium Azide as preservative

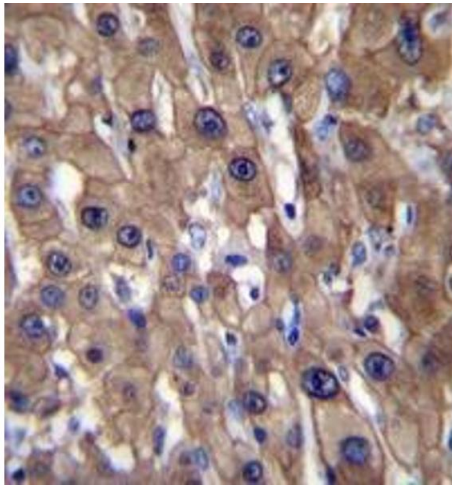
Preservative: Sodium azide

Precaution of Use: This product contains sodium azide: a POISONOUS AND HAZARDOUS SUBSTANCE which should be handled by trained staff only.

Handling Advice: Avoid repeated freezing and thawing.

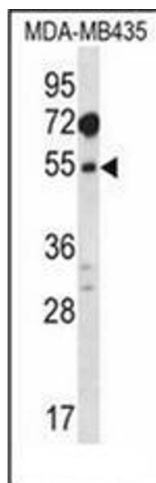
Storage: 4 °C/-20 °C

Storage Comment: Store undiluted at 2-8 °C for one month or (in aliquots) at -20 °C for longer.



Immunohistochemistry (Paraffin-embedded Sections)

Image 1. Immunohistochemistry analysis in formalin fixed and paraffin embedded human liver tissue reacted with MAT1A Antibody (N-term) followed which was peroxidase conjugated to the secondary antibody and followed by DAB staining.



Western Blotting

Image 2. Western blot analysis of MAT1A Antibody (N-term) in MDA-MB435 cell line lysates (35ug/lane). This demonstrates the MAT1A antibody detected the MAT1A protein (arrow).