

Datasheet for ABIN953328
anti-MAT2B antibody (N-Term)[Go to Product page](#)

2 Images

Overview

Quantity:	0.4 mL
Target:	MAT2B
Binding Specificity:	AA 86-116, N-Term
Reactivity:	Human
Host:	Rabbit
Clonality:	Polyclonal
Conjugate:	This MAT2B antibody is un-conjugated
Application:	Western Blotting (WB), Immunohistochemistry (Paraffin-embedded Sections) (IHC (p)), Enzyme Immunoassay (EIA)

Product Details

Immunogen:	KLH conjugated synthetic peptide between 86~116 amino acids from the N-terminal region of human MAT2B
Isotype:	Ig Fraction
Specificity:	This antibody recognizes Human MAT2B (N-term).
Purification:	Protein A column, followed by peptide affinity purification

Target Details

Target:	MAT2B
Alternative Name:	MAT2B (MAT2B Products)

Target Details

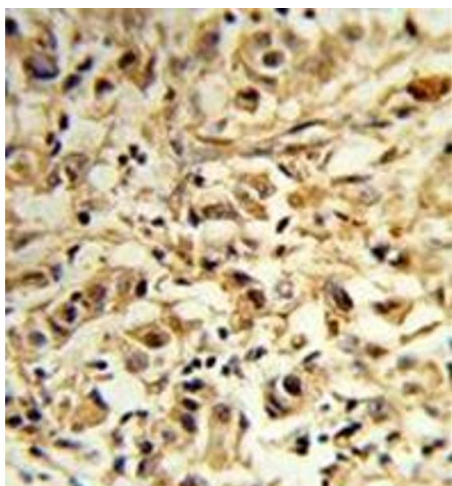
Background:	MAT2B belongs to the methionine adenosyltransferase (MAT) family. MAT catalyzes the biosynthesis of S-adenosylmethionine from methionine and ATP. This protein is the regulatory beta subunit of MAT. Synonyms: DTDP-4-keto-6-deoxy-D-glucose 4-reductase, MATII, MATIIBeta, Mat2 beta, Methionine adenosyltransferase 2 beta, Methionine adenosyltransferase 2 subunit beta, Methionine adenosyltransferase II beta, TGR
Molecular Weight:	37552 Da
Gene ID:	27430
NCBI Accession:	NP_037415
Pathways:	Ribonucleoside Biosynthetic Process , Methionine Biosynthetic Process , SARS-CoV-2 Protein Interactome

Application Details

Application Notes:	Optimal working dilution should be determined by the investigator.
Restrictions:	For Research Use only

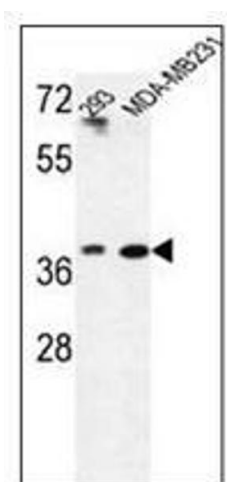
Handling

Format:	Liquid
Concentration:	0.25 mg/mL
Buffer:	PBS containing 0.09 % (W/V) Sodium Azide as preservative
Preservative:	Sodium azide
Precaution of Use:	This product contains sodium azide: a POISONOUS AND HAZARDOUS SUBSTANCE which should be handled by trained staff only.
Handling Advice:	Avoid repeated freezing and thawing.
Storage:	4 °C/-20 °C
Storage Comment:	Store undiluted at 2-8 °C for one month or (in aliquots) at -20 °C for longer.



Immunohistochemistry (Paraffin-embedded Sections)

Image 1. Formalin-fixed and paraffin-embedded human breast carcinoma reacted with MAT2B Antibody (N-term) followed which was peroxidase-conjugated to the secondary antibody, followed by DAB staining. This data demonstrates the use of this antibody for immunohistochemistry; clinical relevance has not been evaluated.



Western Blotting

Image 2. Western blot analysis of MAT2B Antibody (N-term) in 293, MDA-MB231 cell line lysates (35ug/lane). MAT2B (arrow) was detected using the purified Pab.