



[Go to Product page](#)

Datasheet for ABIN953329

anti-MATN1 antibody (C-Term)

2 Images

Overview

Quantity:	0.4 mL
Target:	MATN1
Binding Specificity:	AA 383-413, C-Term
Reactivity:	Human
Host:	Rabbit
Clonality:	Polyclonal
Conjugate:	This MATN1 antibody is un-conjugated
Application:	Western Blotting (WB), Immunohistochemistry (Paraffin-embedded Sections) (IHC (p)), Enzyme Immunoassay (EIA)

Product Details

Immunogen:	KLH conjugated synthetic peptide between 383-413 amino acids from the C-terminal region of human Matrilin-1 Genename: MATN1
Isotype:	Ig Fraction
Specificity:	This antibody recognizes Human Matrilin-1 (C-term).
Purification:	Protein A column, followed by peptide affinity purification

Target Details

Target:	MATN1
Alternative Name:	Matrilin-1 (MATN1 Products)

Target Details

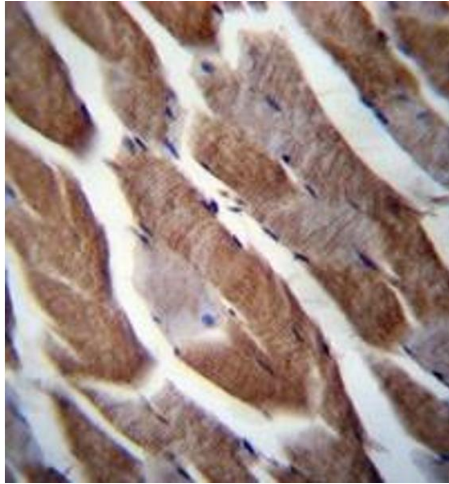
Background:	This gene encodes a member of von Willebrand factor A domain containing protein family. This family of proteins are thought to be involved in the formation of filamentous networks in the extracellular matrices of various tissues. Mutations of this gene have been associated with variety of inherited chondrodysplasias. Synonyms: CMP, CRTM, Cartilage matrix protein, MATN1
Molecular Weight:	53701 Da
Gene ID:	4146
NCBI Accession:	NP_002370

Application Details

Application Notes:	Optimal working dilution should be determined by the investigator.
Restrictions:	For Research Use only

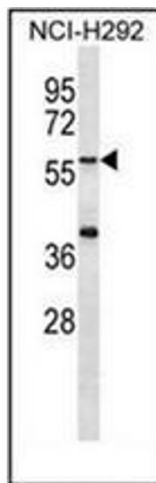
Handling

Format:	Liquid
Concentration:	0.25 mg/mL
Buffer:	PBS containing 0.09 % (W/V) Sodium Azide as preservative
Preservative:	Sodium azide
Precaution of Use:	This product contains sodium azide: a POISONOUS AND HAZARDOUS SUBSTANCE which should be handled by trained staff only.
Handling Advice:	Avoid repeated freezing and thawing.
Storage:	4 °C/-20 °C
Storage Comment:	Store undiluted at 2-8 °C for one month or (in aliquots) at -20 °C for longer.



Immunohistochemistry (Paraffin-embedded Sections)

Image 1. Immunohistochemistry analysis in formalin fixed and paraffin embedded human skeletal muscle reacted with Matrilin-1 Antibody (C-term) followed which was peroxidase conjugated to the secondary antibody and followed by DAB staining.



Western Blotting

Image 2. Western blot analysis of Matrilin-1 Antibody (C-term) in NCI-H292 cell line lysates (35ug/lane).